



VEX 228-2536 Omni Wheel Adapter

A 3D Printed LEGO Compatible mount for the VEX 200mm Travel Omni-Directional Wheel.

Written By: Pete Prodoehl



INTRODUCTION

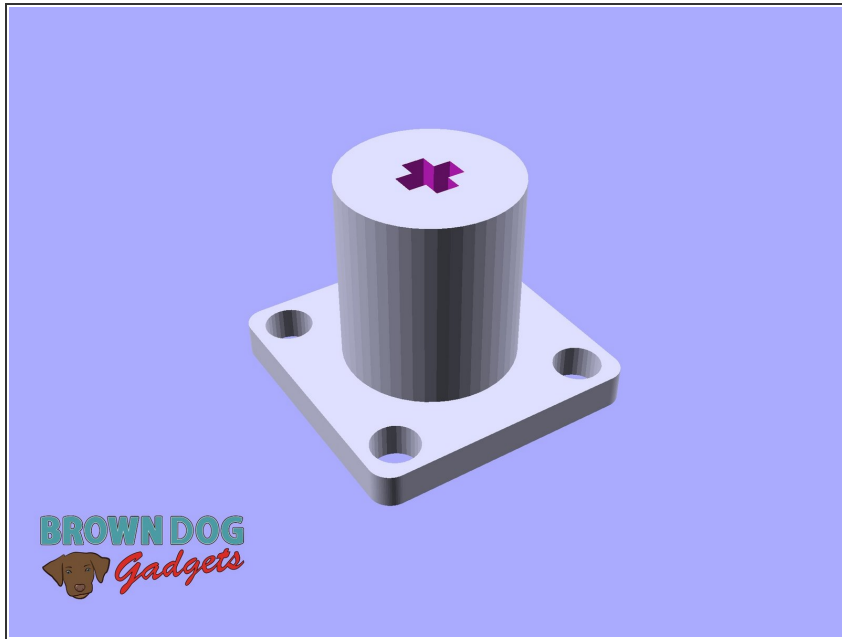
A 3D Printed LEGO Compatible mount for the VEX 200mm Travel Omni-Directional Wheel.



TOOLS:

- [3D Printer](#) (1)
-

Step 1 — Download and Print



- You can download the file and print it on your own 3D Printer.
- Find it in our GitHub repository: <https://github.com/BrownDogGadgets/3D-Pr...>
- This file will work with this [VEX 200mm Travel Omni-Directional Wheel \(228-2536\)](#).
- There is a 4mm version and a 3mm version. The 4mm version will fit perfectly, and the 3mm version will have a bit more play.

Step 2 — Assembly Hardware



- You will need 4 bolts (12mm in length) as well as 4 matching hex nuts. You should choose either 4mm bolts or 3mm bolts depending on which adapters you print.
- **4mm Hardware**
 - 4 x [Metric machine screws, Phillips pan head, Zinc plated steel, 4mm x 0.7mm x 12mm](#)
 - 4 x [Metric hex nuts, Zinc plated class 8.8 steel, 4mm x 0.7mm](#)
- **3mm Hardware**
 - 4 x [Metric machine screws, Phillips pan head, Zinc plated steel, 3mm x 0.5mm x 12mm](#)
 - 4 x [Metric hex nuts, Zinc plated class 8.8 steel, 3mm x 0.5mm](#)