



Spy Camera Holder

A 3D Printed LEGO Technic Compatible mount for a cheap Spy Camera.

Written By: Pete Prodoehl



INTRODUCTION

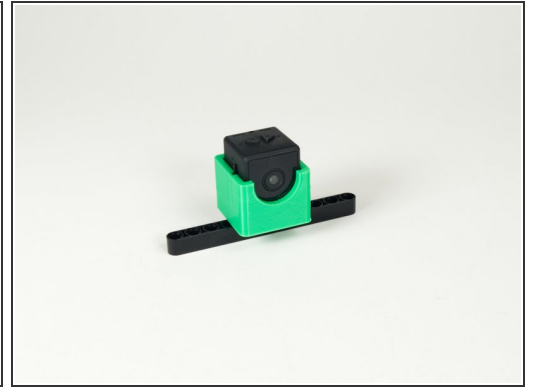
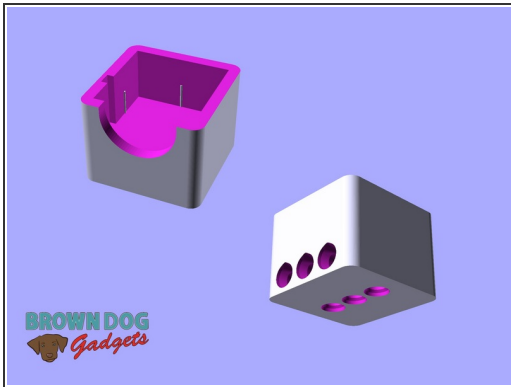
A 3D Printed LEGO Technic Compatible mount for a cheap Spy Camera.



TOOLS:

- [3D Printer](#) (1)
-

Step 1 — Download and Print



- You can download the file and print it on your own 3D Printer.
- Find it in our GitHub repository: <https://github.com/BrownDogGadgets/3D-Pr...>
- This file will work with this [Spy Camera](#). Other cameras may not be the same dimensions.

Step 2 — Tips & Tricks

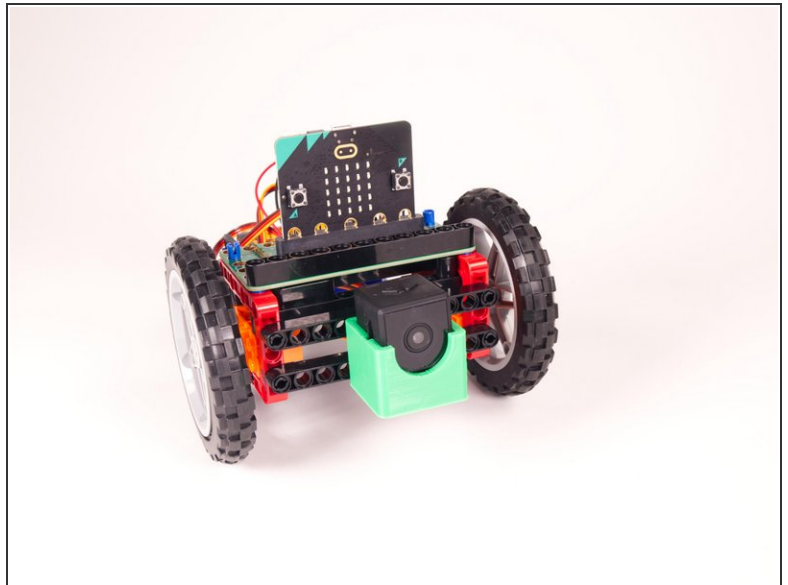
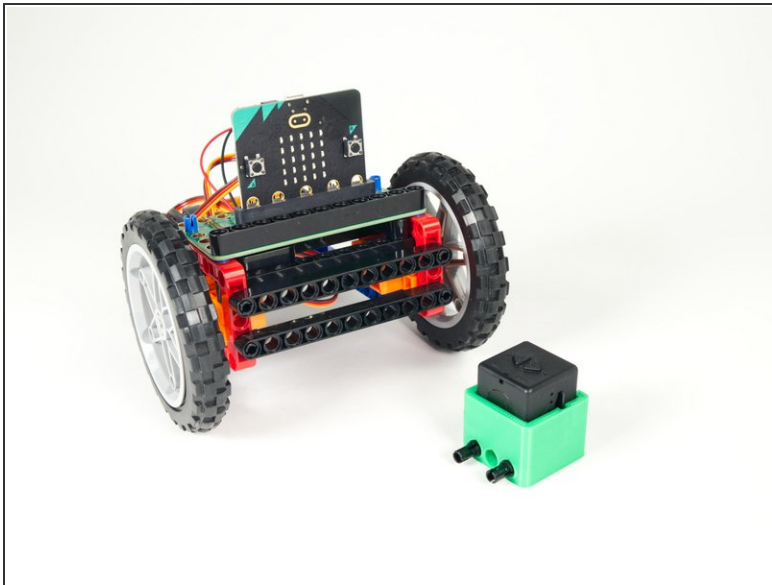


- The Spy Camera should sit inside the holder snug with a good friction fit.

⚠ Every 3D printer is a little different! If your part doesn't fit on a baseplate here are a few things to try.

- Part too tight? Try sanding it or cutting away some material with a knife.
- Part too loose? Add some tape to shim it in place.
- You can also try printing it at slightly more or less than 100% scale.

Step 3 — Mount the Camera



- The Spy Camera Mount has LEGO Technic holes on the bottom and the back, so you can easily mount it to any Technic Beam... or the front of your Rover!