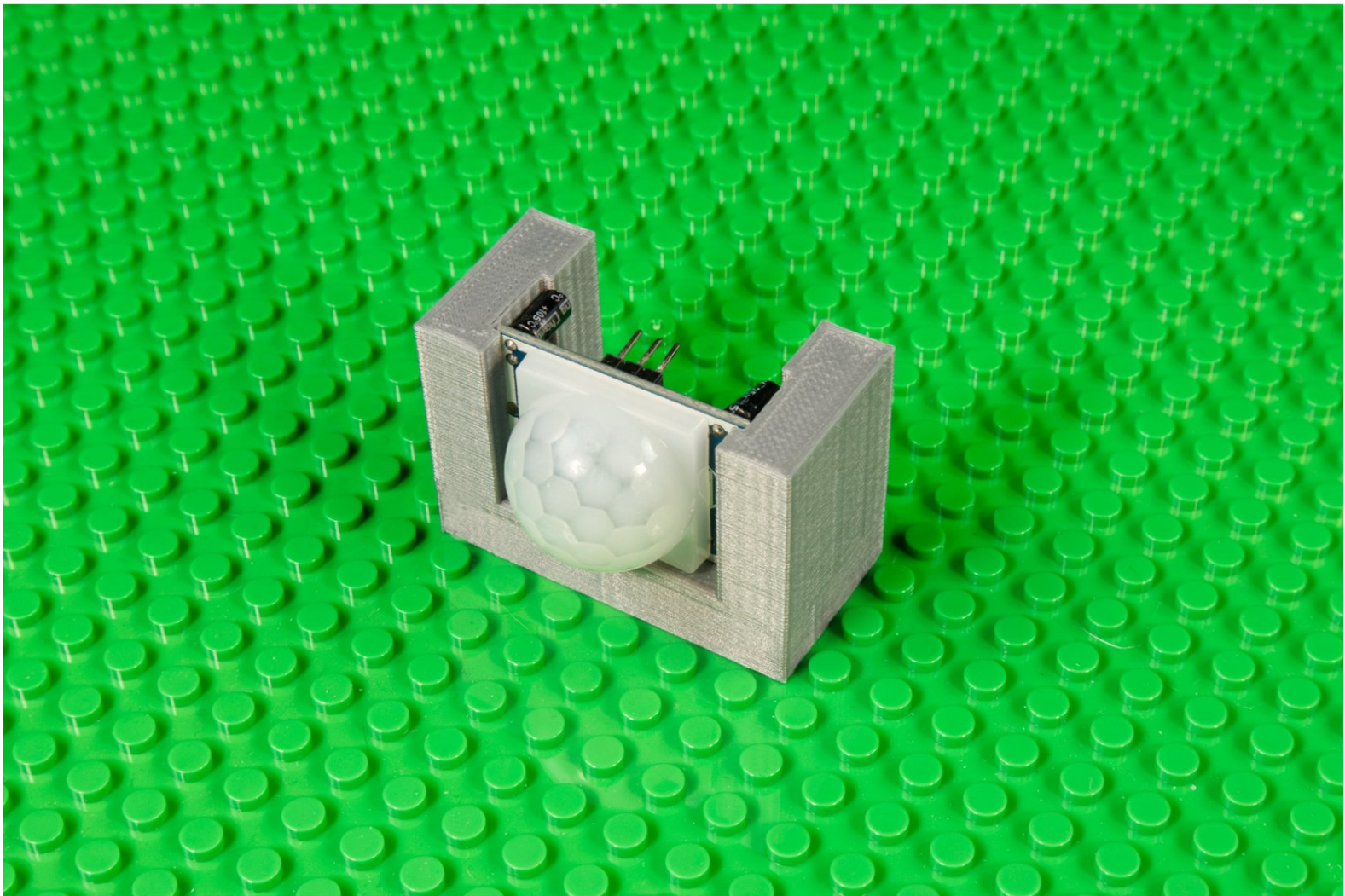




PIR Sensor Holder

A 3D Printed LEGO Compatible mount for a PIR Sensor.

Written By: Pete Prodoehl



INTRODUCTION

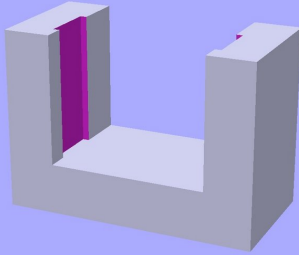
A 3D Printed LEGO Compatible mount for a PIR Sensor.



TOOLS:

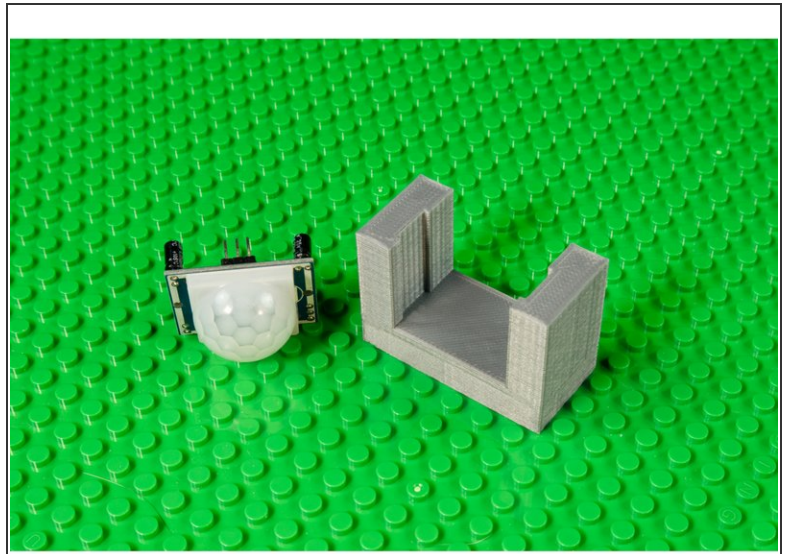
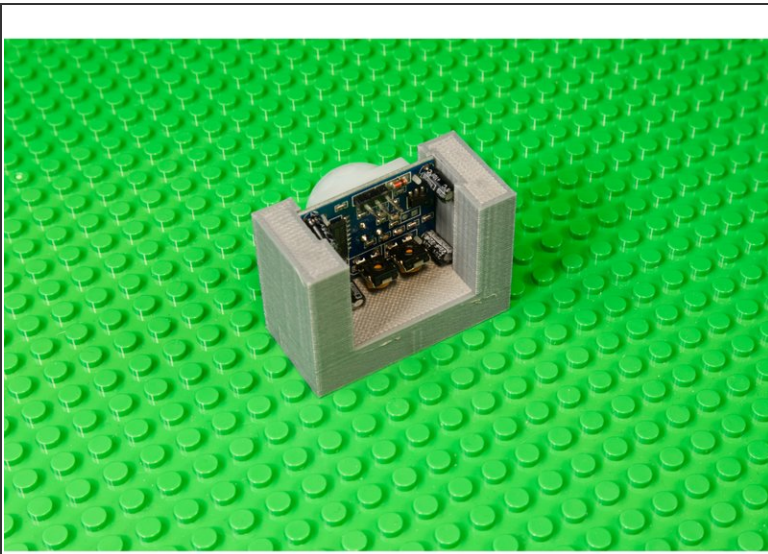
- [3D Printer](#) (1)
-

Step 1 — Download and Print



- You can download the file and print it on your own 3D Printer.
- Find it in our GitHub repository: <https://github.com/BrownDogGadgets/3D-Pr...>
- This file will work with this [PIR Sensor](#).

Step 2 — Tips & Tricks



- The PIR Sensor slides into the holder and is held in place by gravity.

⚠ Every 3D printer is a little different! If your part doesn't fit on a baseplate here are a few things to try.

- Part too tight? Try sanding it or cutting away some material with a knife.
- Part too loose? Add two LEGO bricks on opposite sides of the part.
- You can also try printing it at slightly more or less than 100% scale.