



Tubes of Terror

Use our printable templates and this step-by-step guide to create some fun, spooky paper craft luminaries!

Written By: Andy Wallus



INTRODUCTION

Use our printable templates and this step-by-step guide to create some fun, spooky paper craft luminaries!

In this guide we have both a B&W version of these templates which can be easily drawn on as well as a pre-colored one for printing on a colored printer. The files for all of these can be found at the very BOTTOM of this page.



TOOLS:

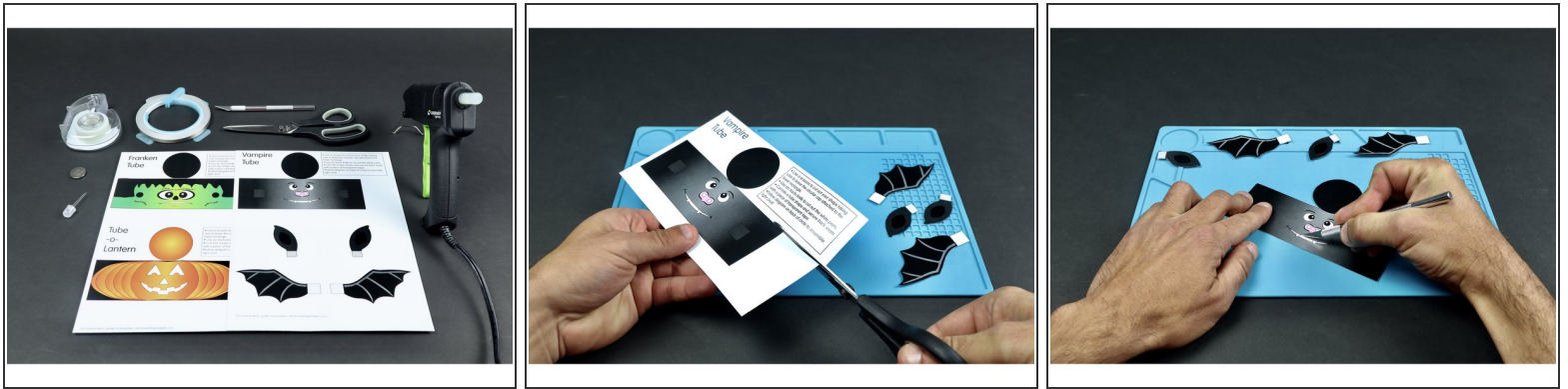
- [Scissors](#) (1)
- [X-ACTO Knife](#) (1)
- [Tape](#) (1)
- [Markers, Crayons, or Colored Pencils](#) (1)



PARTS:

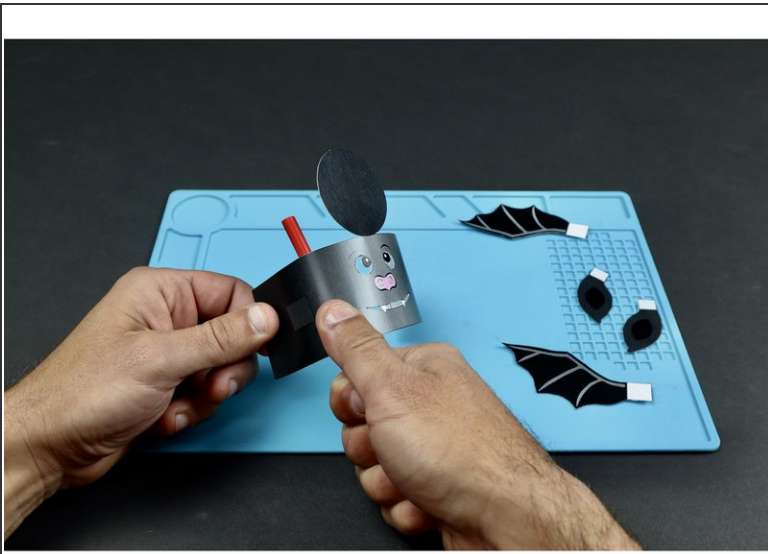
- [Paper Circuits Kit](#) (1)

Step 1 — Tubes of Terror



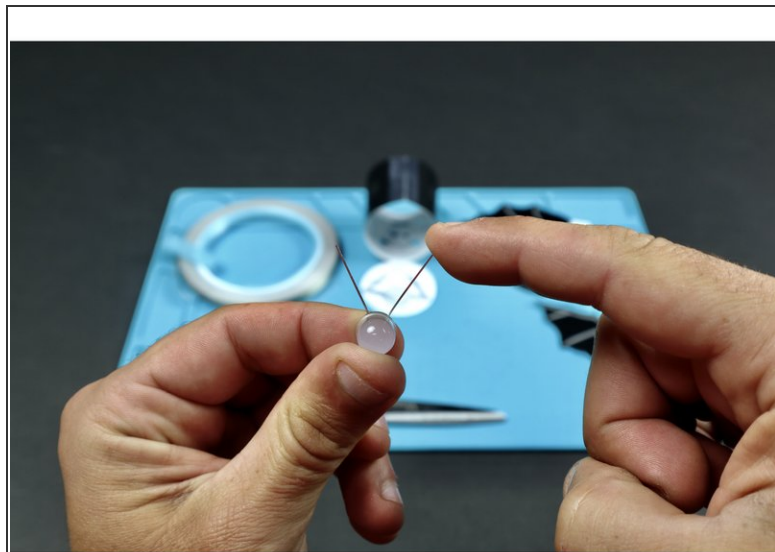
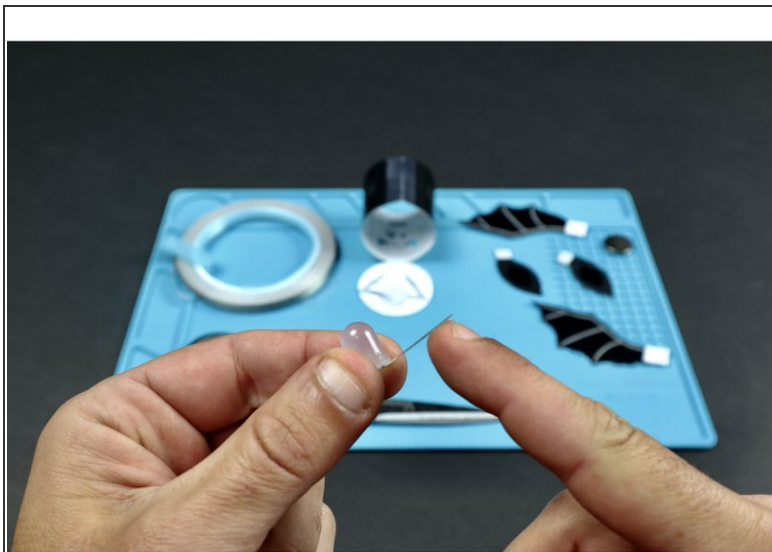
- **BEFORE YOU BEGIN:** If you want to create a version of this project that does NOT require use of an X-ACTO knife, simply print the template on standard copy paper.
 - **Print cut and color** your spooky project/parts on heavy card stock.
 - Using an X-ACTO knife, **carefully cut out and remove the white facial features** indicated on the template (as if you were carving a Jack-o-Lantern).
- ☒ Remember, B&W versions of these templates can be found at the very END of this guide. Those are suitable for printing and coloring with colored pencils.

Step 2



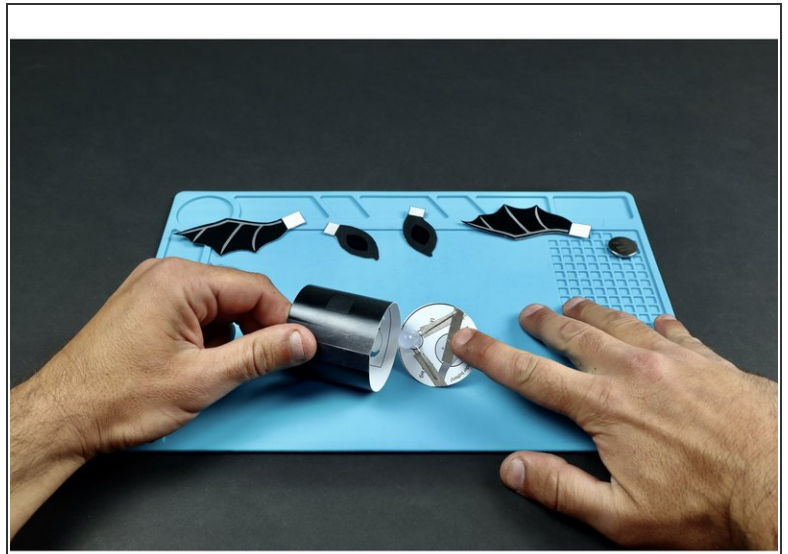
- **Using a pencil as shown**, pull the project against this round shape from straight edge to straight edge. **This will give the project a curl** and make it easier to turn into a tube.
- **Bring the two matching straight edges together** to form the tube shape and **use a single piece of transparent tape** to hold the seam together.

Step 3 — Assembling the light circuit



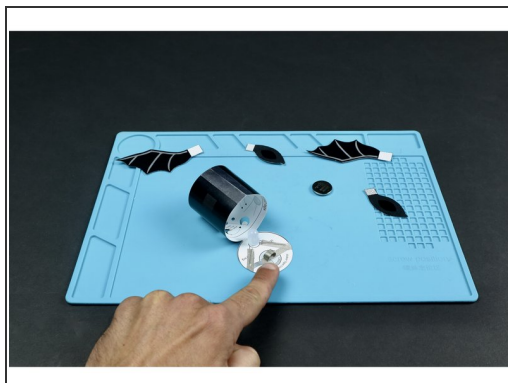
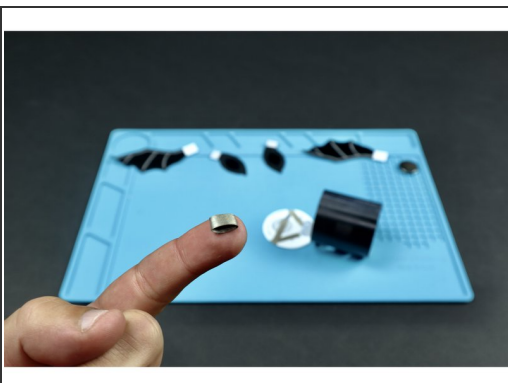
- Prepare the LED by **bending the legs so that the LED bulb can lay flat**. Then **bend them outward in opposite directions** so there's enough space between them for a battery to sit without touching.
- **Take care** to flatten the legs so that the long and short leg are oriented in the way shown on the back of the circular lid.

Step 4



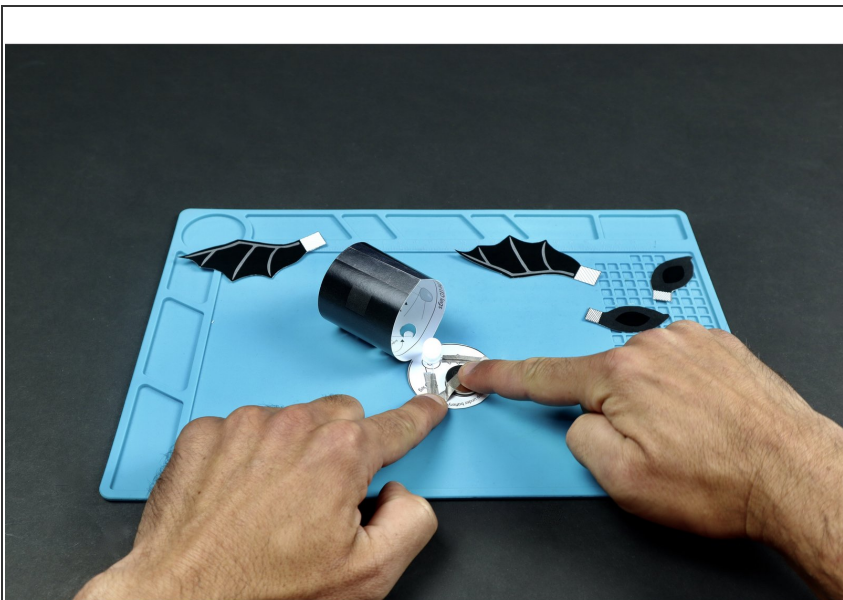
- **Use the circuit diagram** on the back of the project's circular lid to assemble the circuit.
- First, use two Maker Tape sections to **secure LED legs in place**. Make sure to note the length of the legs and orient the LED/legs to match the diagram. Then, **add the Maker Tape section shown** so that it connects to the tape path leading from the SHORT LED leg.

Step 5



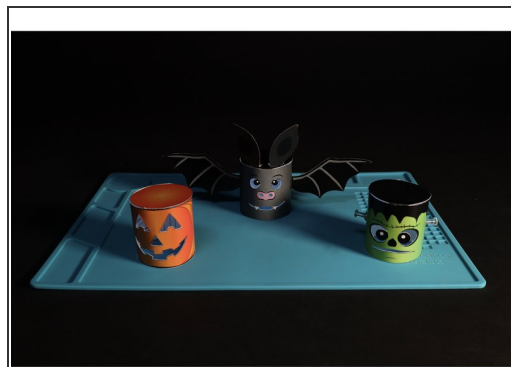
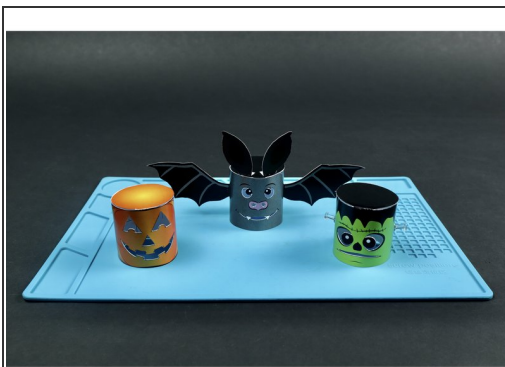
- **Make a tape loop** out of Maker Tape.
- **Stick the tape loop** onto the end of the tape section that you last placed as shown.
- **Stick the battery** onto the **tape loop** so that the positive side faces UP.

Step 6



- **Add the final piece of Maker Tape and fold the lid down** to seal the deal! **Note:** Connecting this final piece of Maker Tape to the top of the battery turns the light on. Peeling it back will turn it off.

Step 7



- **Add embellishments** afterward to decorate.
- **Happy Halloween!!!**

Pro Tip: Use some colored push pins to add some bolts to FrankenTube or a stem to the Tube O' Lantern!