



# Light-Up Reindeer Hat

Make a reindeer hat that lights up with a simple paper circuit. Another fun animal paper circuit.

Written By: Natasha Dzurny



# INTRODUCTION

Make a reindeer hat that lights up with a simple paper circuit.

There's a full-color version as well as a black & white version that makes a great coloring activity.

You can make this project (and many more!) with our **Paper Circuits Kit**.



## TOOLS:

- [Scissors](#) (1)
- [Printer \(to print out the template\)](#) (1)



## PARTS:

- [Paper Circuits Kit](#) (1)
- [Craft Foam](#) (1)
- [Cardstock](#) (1)

## Step 1 — Print the Template



- Print the template double-sided so that the circuit prints on the back of the reindeer design.
- If you'd like to color the reindeer, print out the coloring template (pages 3-6). Use colored pencils or markers to color your project before proceeding to the next step.

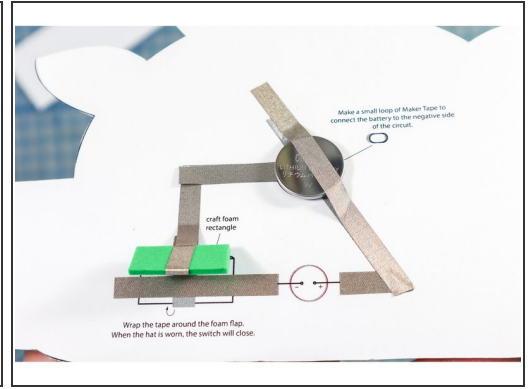
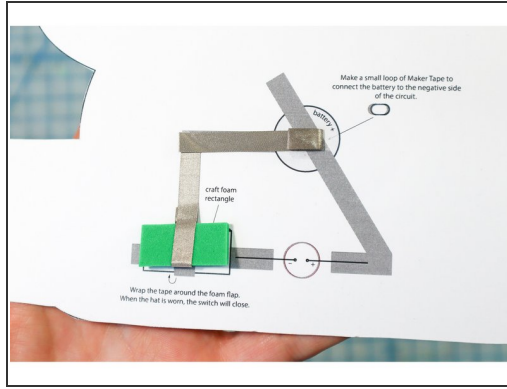
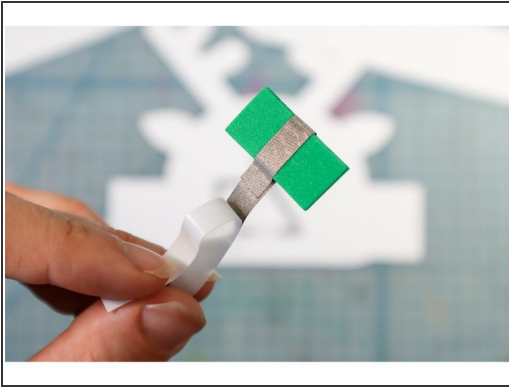
## Step 2 — Cut out the Shapes



- Cut out the shapes. For best results, cut from the front side in case your print doesn't line up properly with the back.
- Cut the small rectangle out of craft foam.

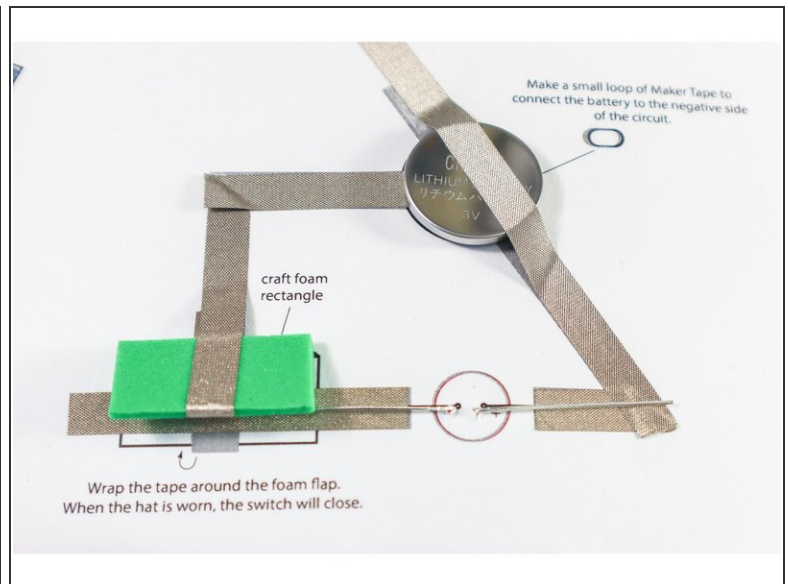
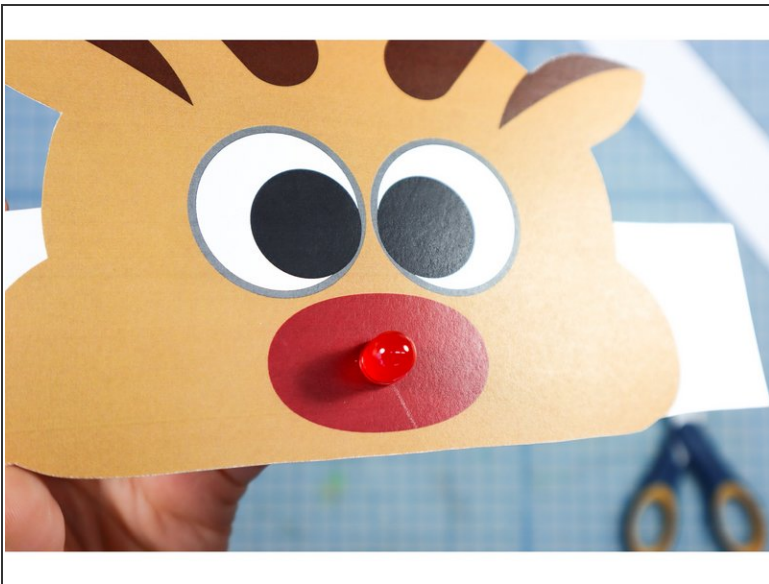


### Step 3 — Add Maker Tape



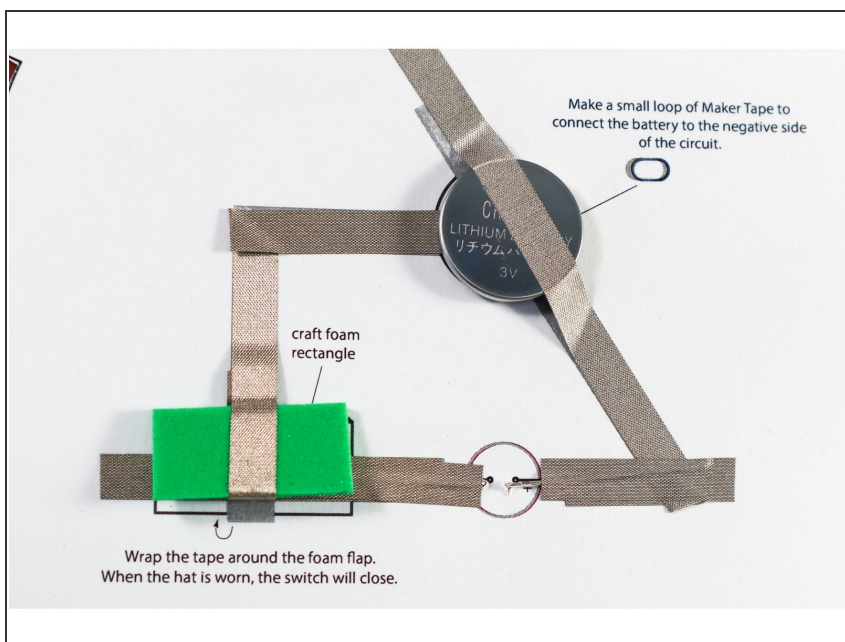
- Wrap Maker Tape around the foam rectangle as shown.
- Position the rectangle over the template, and continue to lay the Maker Tape over the line, looping the end under the battery circle.
- Place the battery with the positive side up. Add another piece of Maker Tape over the battery and around the bend.

### Step 4 — Add the LED



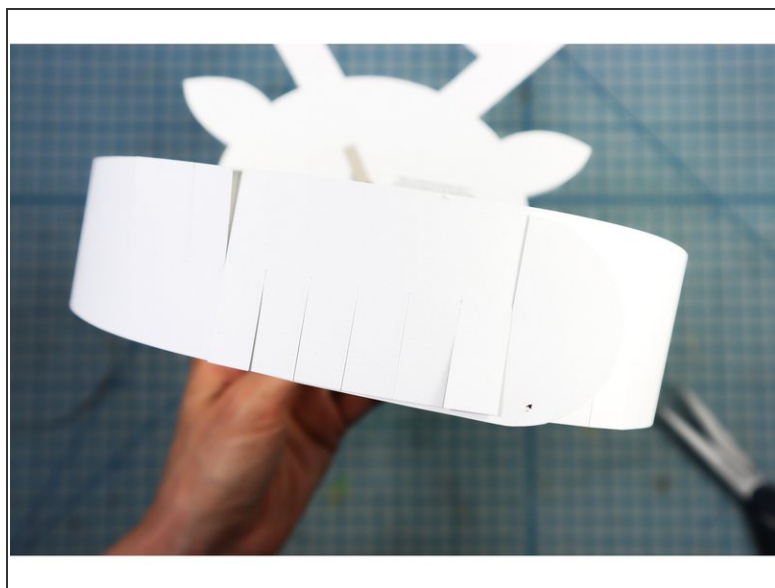
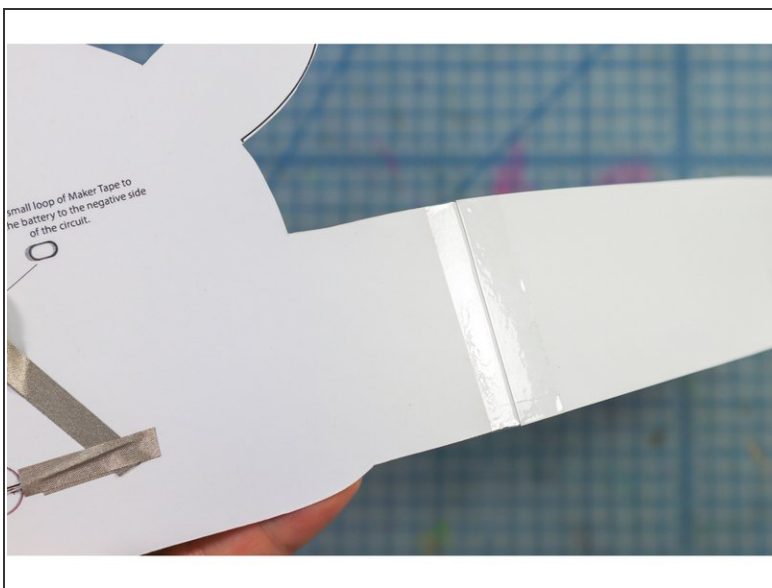
- Poke small holes in the center of the nose where shown and insert the LED, matching the positive and negative notation.
- Fold the LED legs flat on top of the Maker Tape traces on the back.

## Step 5 — Reinforce the LED



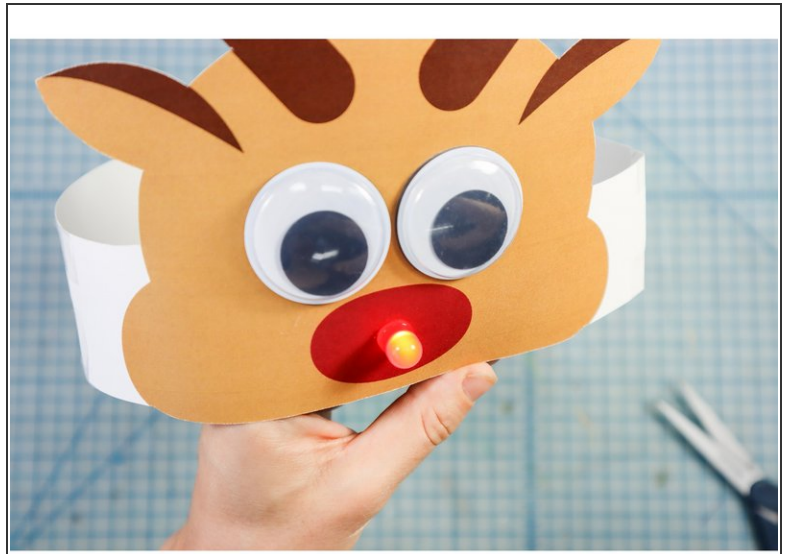
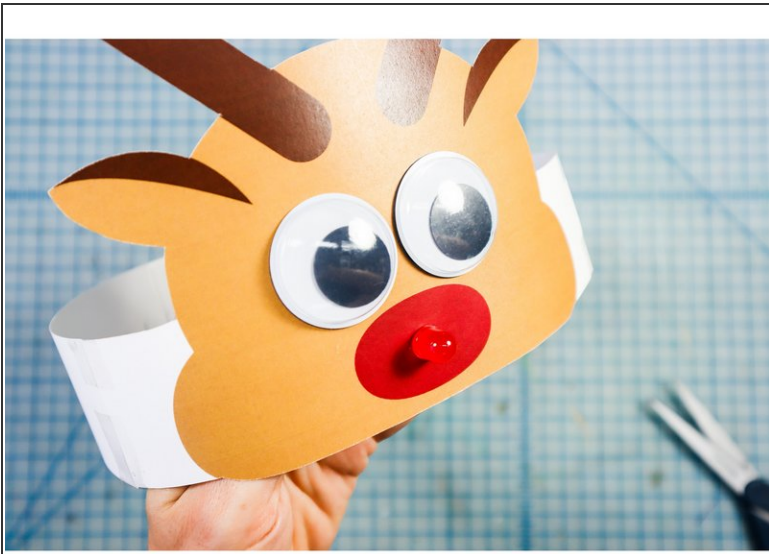
- Add another piece of Maker Tape on top of the LED's legs as shown.

## Step 6 — Attach the Headband



- Tape the headband pieces to the sides of the paper as shown.
- One side's fringe will face up and the other will face down so that you can interlock them as shown.

## Step 7 — Optional: Add Googly Eyes



- The template has 1.5-inch eyes - the perfect size for 1.5-inch googly eyes! They are optional but add a ton of personality. Glue them in place over the printed eyes.