



Molded LED Valentine Bag with Conductive Hook & Loop Closure

Make a Valentine Bag with a Molded LED and Conductive Hook & Loop Closure.

Written By: Andy Wallus



INTRODUCTION

This project can be completed with a regular LED. However, as pictured, it uses a **Molded LED**. If you've never done it before, take a look at the [Molded LEDs for small candy molds](#) guide.

You can make this project (and many more) with our **Wearables Circuits Kit**.



TOOLS:

- [Heart-Shaped Candy Mold](#) (1)
 - [Hot Glue Gun](#) (1)
 - [Hot Glue](#) (1)
- Colored
- [Scissors](#) (1)
 - [Cardboard](#) (1)

Scraps for use in molding process

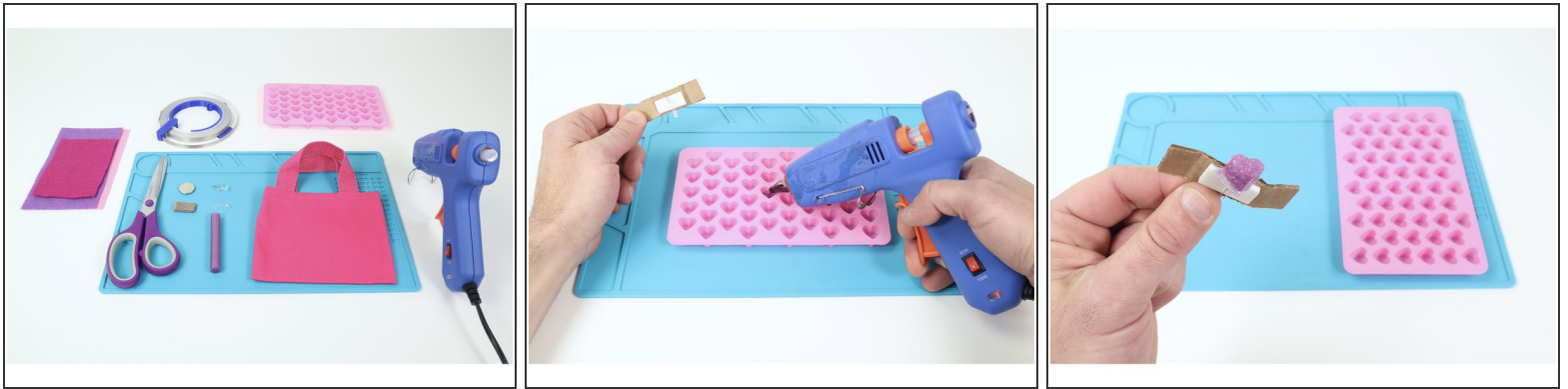
- [Masking Tape](#) (1)
- For use in molding process*
- [Push Pin](#) (1)



PARTS:

- [Maker Tape](#) (1)
- 1/4" Wide
- [Conductive Hook and Loop](#) (1)
 - [CR2032 Battery](#) (1)
 - [3mm or 5mm LEDs](#) (1)
 - [Felt](#) (1)

Step 1 — Gather Materials/Prep Molded LED



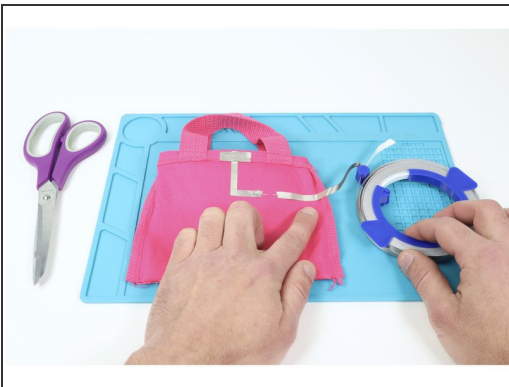
- **Gather the materials and tools listed** in this guide.
- Select an LED. **Use hot glue and a heart-shaped candy mold to create a single molded LED.** If you've never made a molded LED before, use the step-by-step guide linked to both the introduction of this guide and a QR code on the featured document.
- **NOTE:** Ordinarily, when molding an LED, you don't need to worry about which way you orient the LED in the mold. For this one **make sure the short leg is on the right when looking the two round humps of the heart shape.** Doing so ensures the circuit diagram will match your own setup.

Step 2 — Outside the Bag



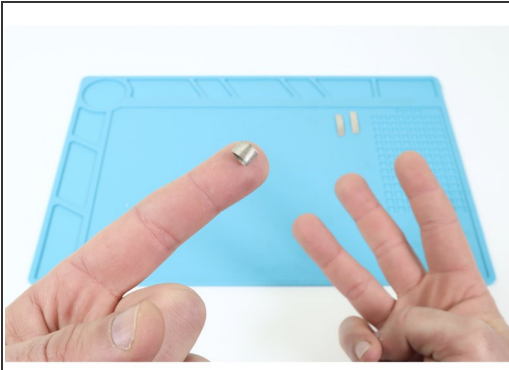
- **Cut a couple hearts out of felt and hot glue them into place** atop the outside of your bag where shown.
- Use a pushpin to **make 2 holes all the way through to the inside of the bag**.
- **Thread your LED** (we molded a heart shape around ours first) **legs** through the holes. **Take care to orient the long and short legs as indicated on the featured document.**

Step 3 — Initial Maker Tape Paths (Inside Bag)



- **Turn your bag inside out.**
- Follow the diagrams on the featured document or the photos at left to **create Maker Tape paths where shown. Take note that there is an LED Side and a Battery Side of the bag.**

Step 4 — Make and place Maker Tape Loops



- **Cut three small pieces of Maker Tape and turn them into three tape loops, placing them afterward atop your existing Maker Tape paths where shown at left and in step 6 of the featured document.**

Step 5 — Add Conductive Hook & Loop



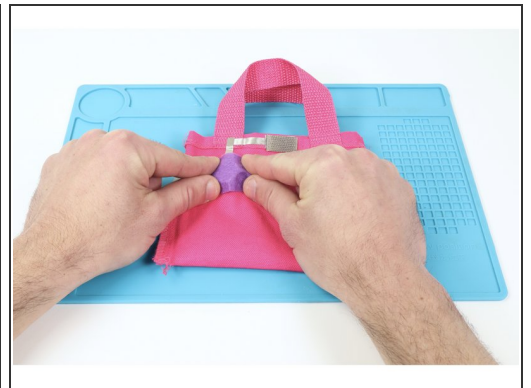
- Using one of the three methods described in our Conductive Hook & Loop guide (included at the end of the featured document), **attach Conductive Hook on one side atop one of the upper Tape Loops and the Conductive Loop atop the remaining upper tape loop.**

Step 6 — Add Battery and Final Maker Tape Path



- **Stick a CR2032 battery positive (+) side UP atop the remaining lower tape loop. Then measure, cut, peel and stick a final Maker Tape path connecting the top of the battery to the Maker Tape path above the battery as shown.**

Step 7 — Protect Your Battery



- So that your battery doesn't get knocked loose when putting things in your bag, **cut and hot glue a small square of felt just a little bit bigger than your battery where shown.**

Step 8



- **Oooh La La! Your Valentine Bag is now complete.** When the Hook and Loop is connected, the circuit is complete and the LED will turn on. When the bag is open, the circuit is also open/incomplete and the LED will turn off!