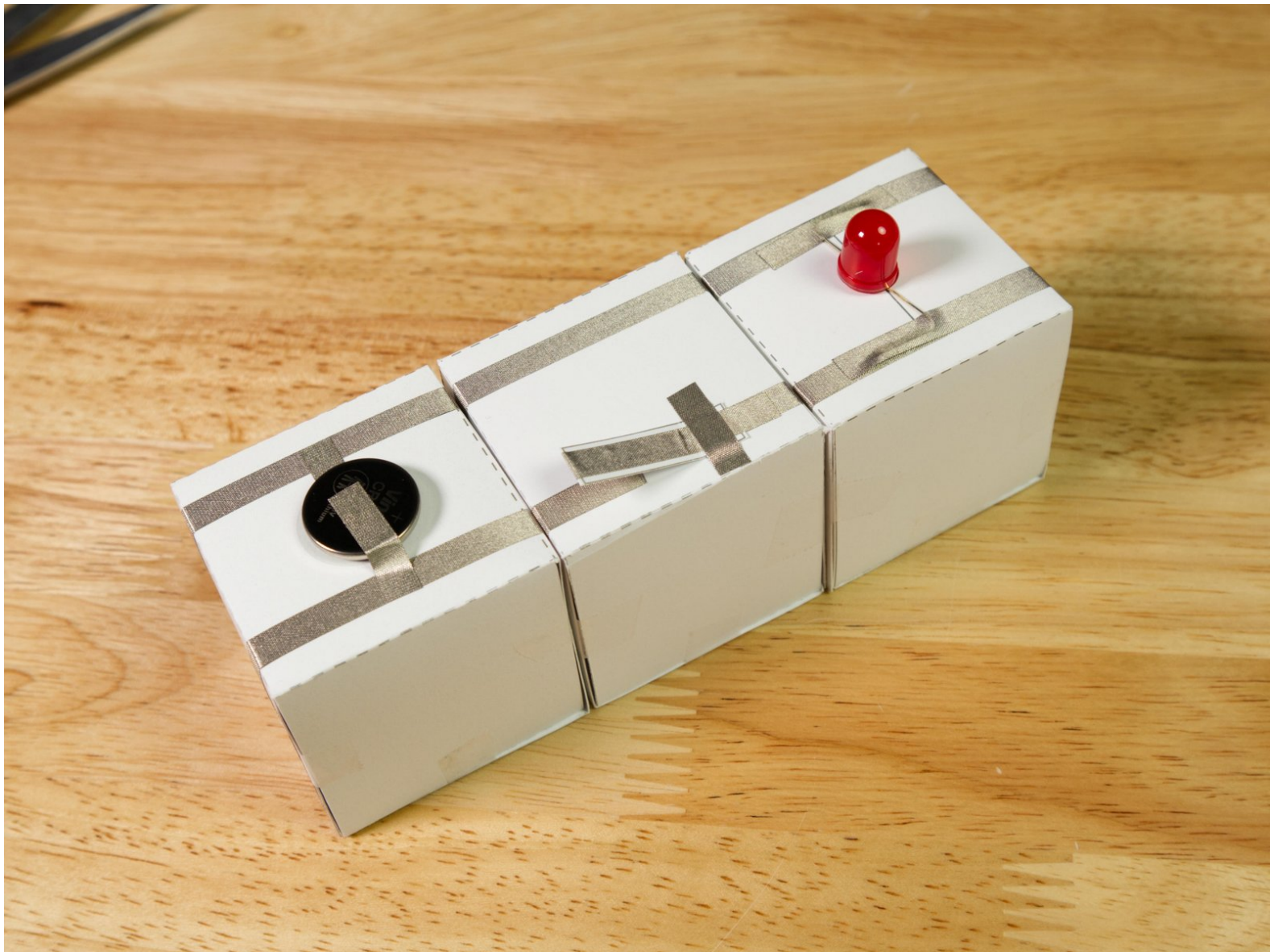




Paper Circuits Cubes - Lever Switch

Use these easy to make Paper Circuits Cubes to demonstrate the basics of circuitry. Learn about open and closed circuits, polarity, power and components.

Written By: Pete Prodoehl



INTRODUCTION

Use these easy to make [Paper Circuits Cubes](#) to demonstrate the basics of circuitry. Learn about open and closed circuits, polarity, power and components.

Besides our **Paper Circuits Kit** (which contains Maker Tape, batteries, and LEDs) you'll need a few magnets, washers, and tape.



TOOLS:

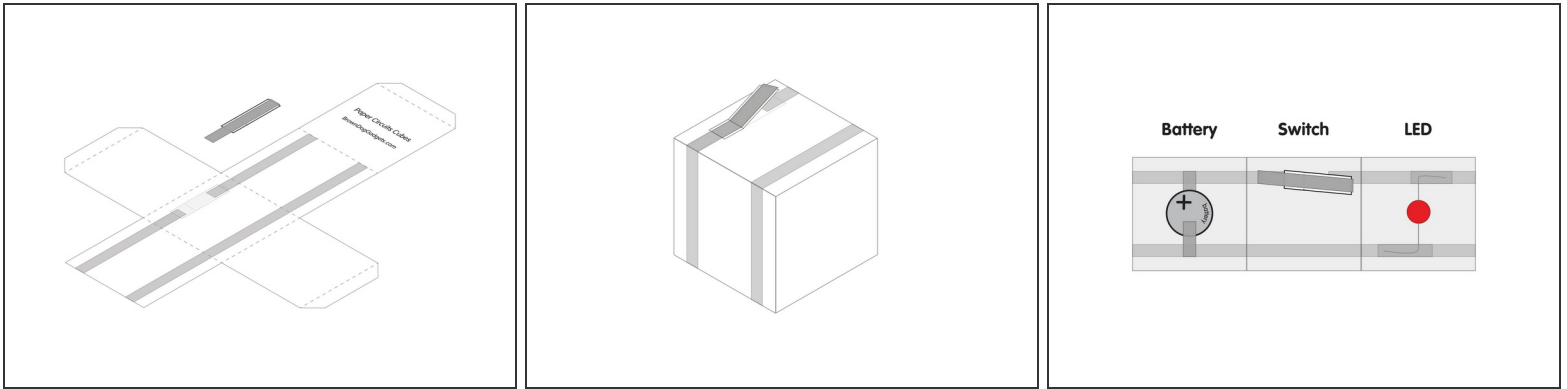
- [Scissors](#) (1)
- [X-ACTO Knife](#) (1)



PARTS:

- [Paper Circuits Kit](#) (1)
- [Tape](#) (1)
- [Masking Tape](#) (1)
- [Ceramic Magnets \(18mm\)](#) (1)
- [Washers](#) (1)

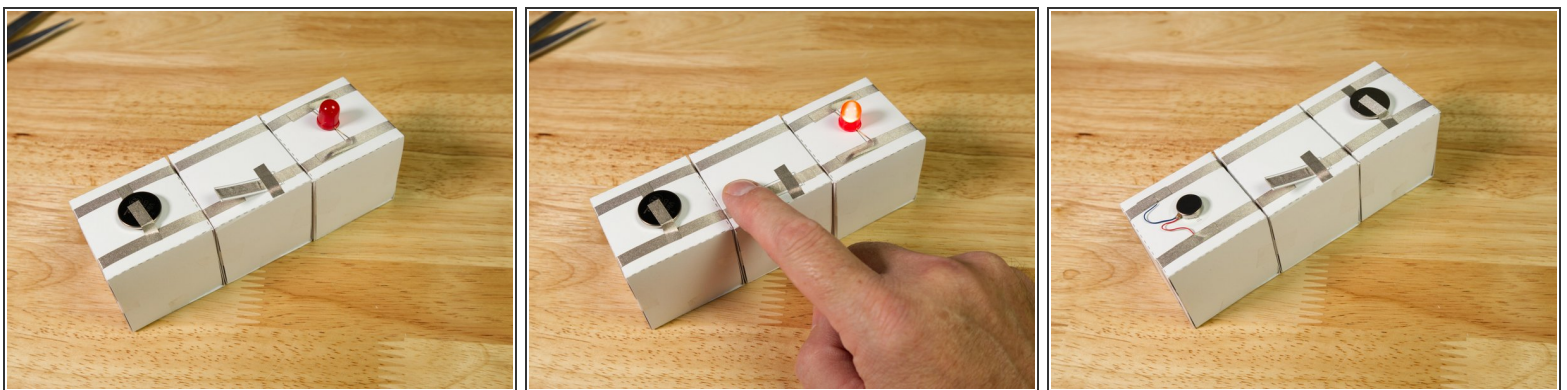
Step 1 — Build the Cube



⚠ If you haven't built any cubes yet make sure to check out the guide for [Paper Circuits Cubes](#) first.

- Use this cube as an on/off switch between a power cube and output cube, such as an LED.
 - This is the same switch from our [Switch - Lever Switch](#) guide.
- ☑ Reminder: Assemble the cube before you apply the Maker Tape as it needs to wrap around multiple sides of the completed cube.

Step 2 — Use the Cube



- With the Lever Switch Cube you can control when your circuit is providing power.
- Just add the Level Switch Cube between your power source and any component that needs power to operate.