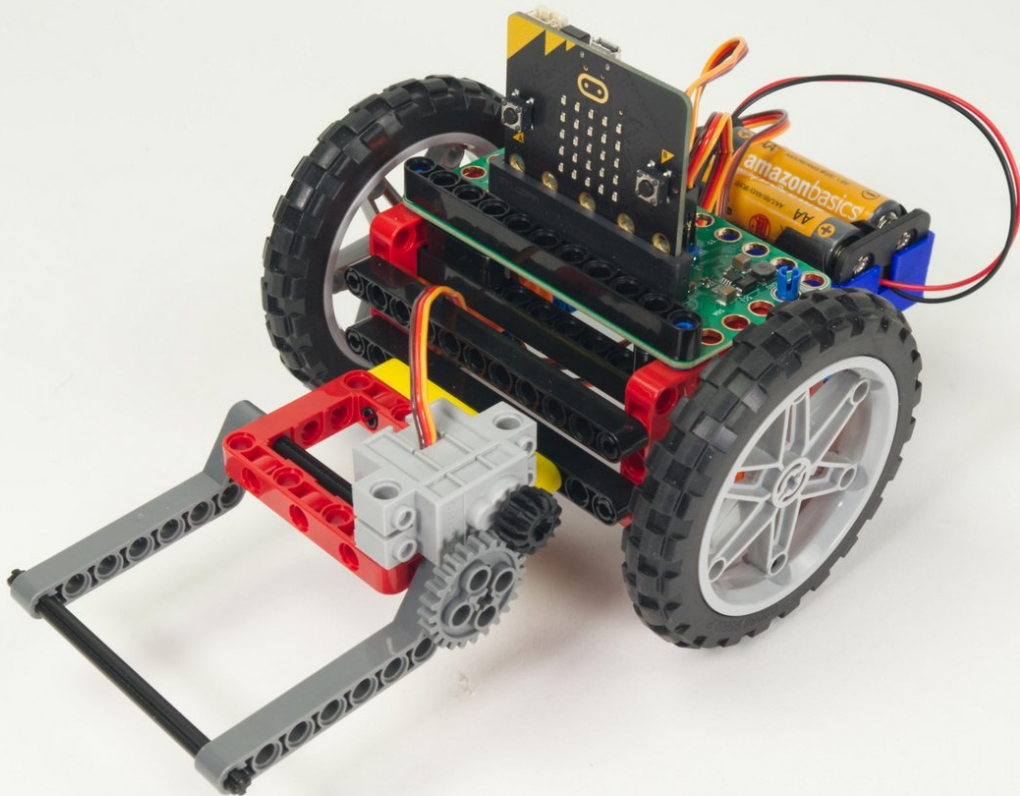




Rover Lifter

Build a Lifter for the Rover! This project uses a set of LEGO Technic components to build a simple gripper mechanism for our Rover.

Written By: Pete Prodoehl



INTRODUCTION

If you've built our [Rover Main Body](#) this is a great accessory. An easy-to-build Lifter than can attach to the front of the Rover.



TOOLS:

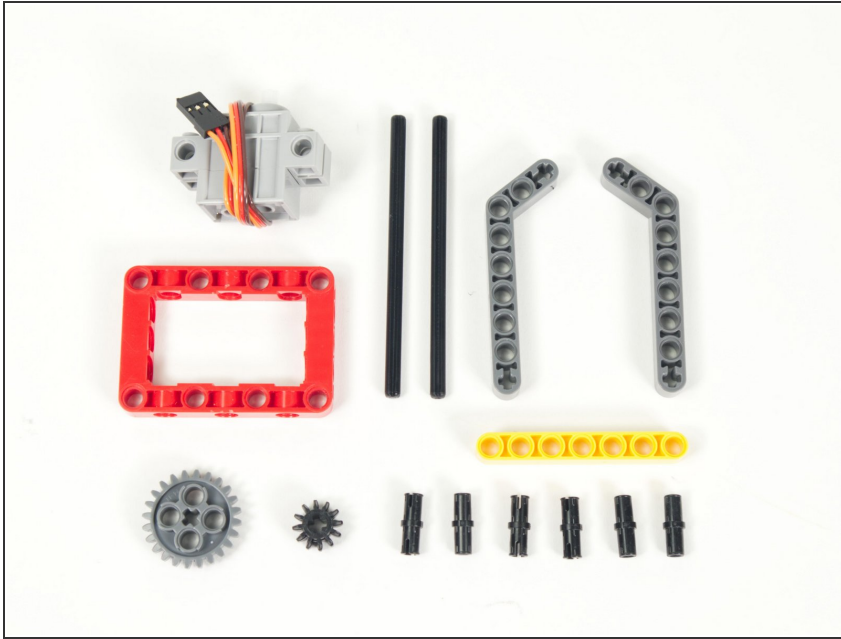
- [Computer](#) (1)



PARTS:

- [Bit Board Rover](#) (1)

Step 1 — Gather Components



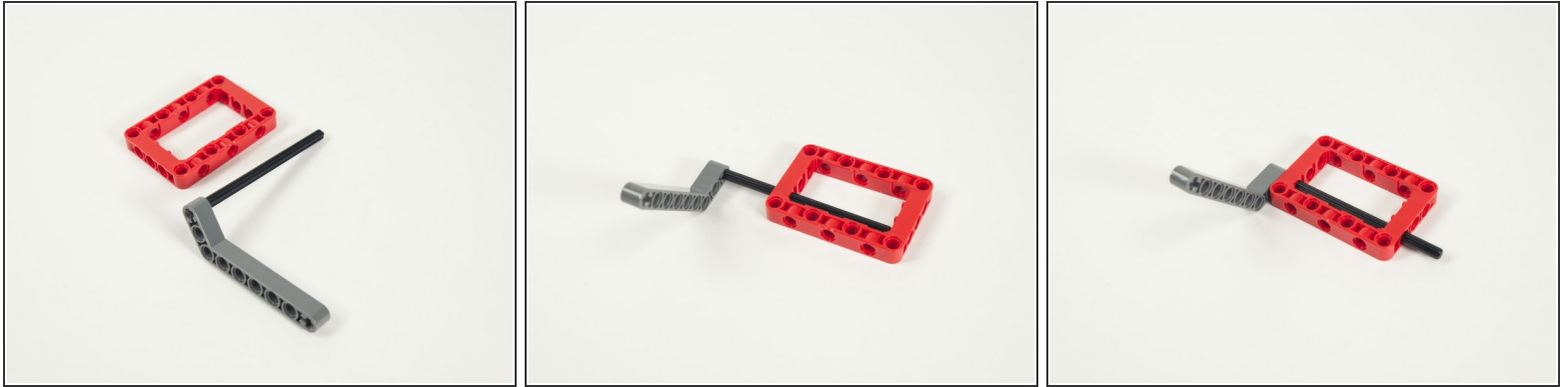
- Gather the parts needed to assemble the Lifter.
- You'll need the following parts along with a Brick Compatible 270 Degree Servo.

Step 2 — Add Axle to Angled Beam



- We'll start by sliding the axle into the angled beam.
- The axle should be flush with the end of the beam.

Step 3 — Slide Axle into Frame



- Slide the axle (with the beam attached) into the red frame.

Step 4 — Add Angled Beam to Other Side



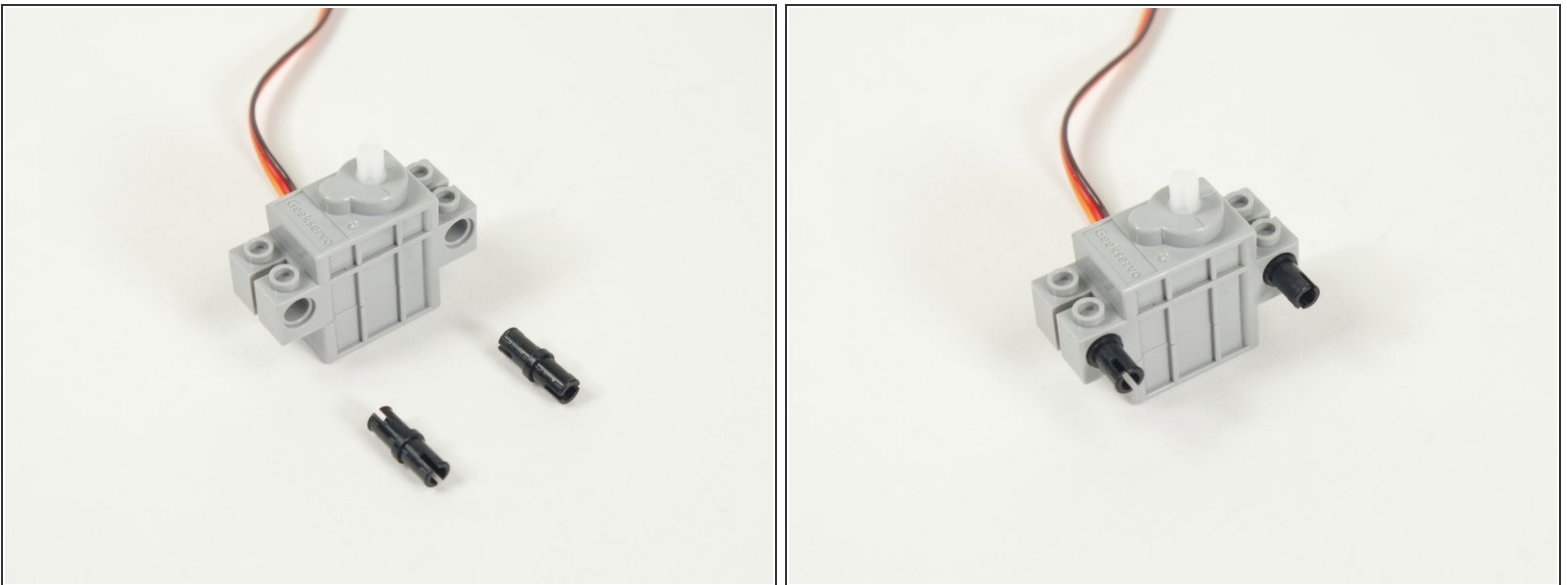
- Add the other angled beam to the other side.
- Note that the axle should stick out from the second beam, as this is where we'll add the large gear in Step 9.

Step 5 — Add Second Axle to Angled Beams



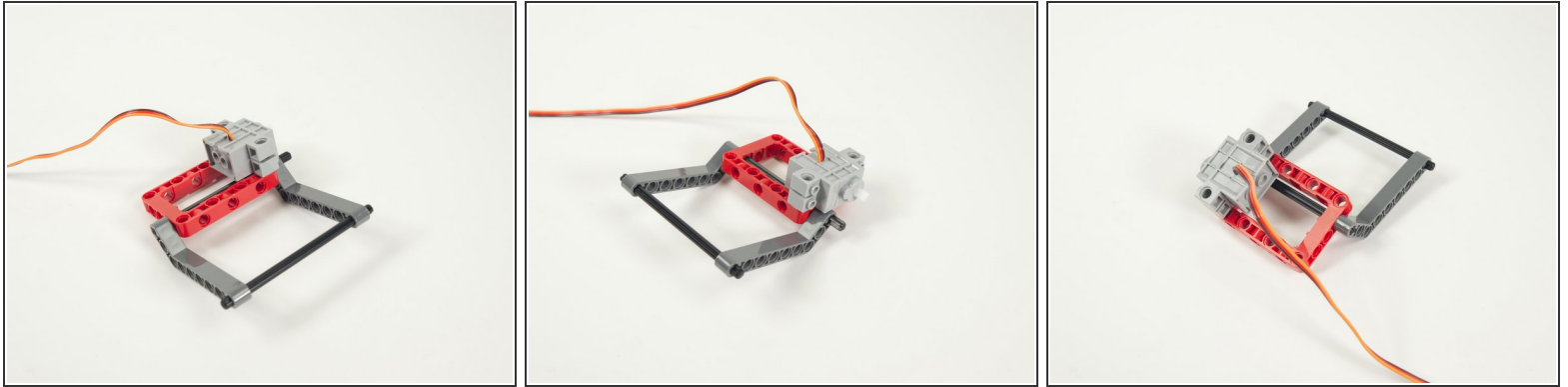
- Add the other axle by sliding it into the first holes in the angled beams.
- Try to center the axle and make sure the beams are not angled in or out - they should be facing straight out.

Step 6 — Add Pins to Servo



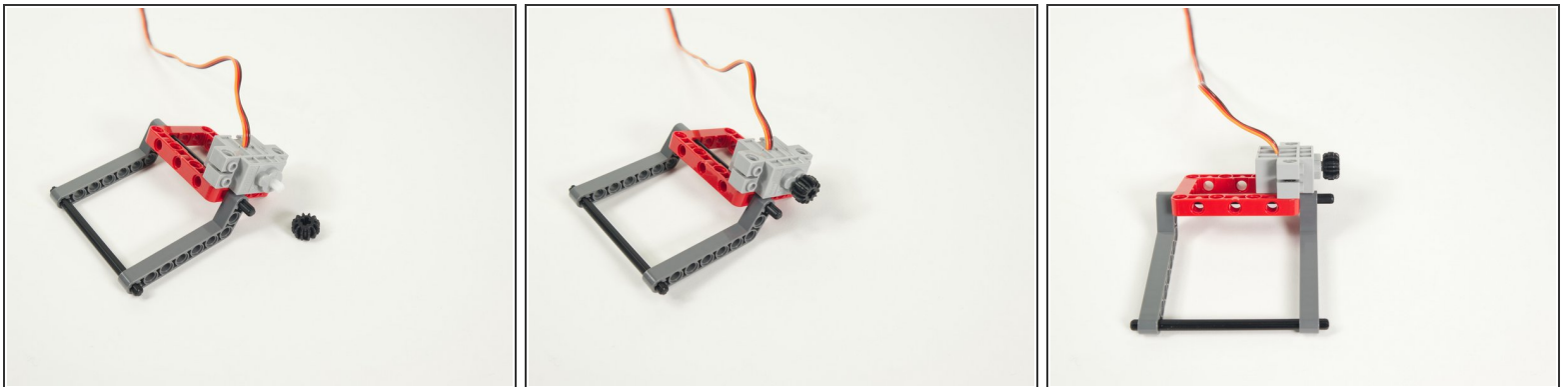
- Add two black pins to the servo.
- Make sure you add the pins to the side of the servo opposite where the wires are connected.

Step 7 — Place Servo onto Frame



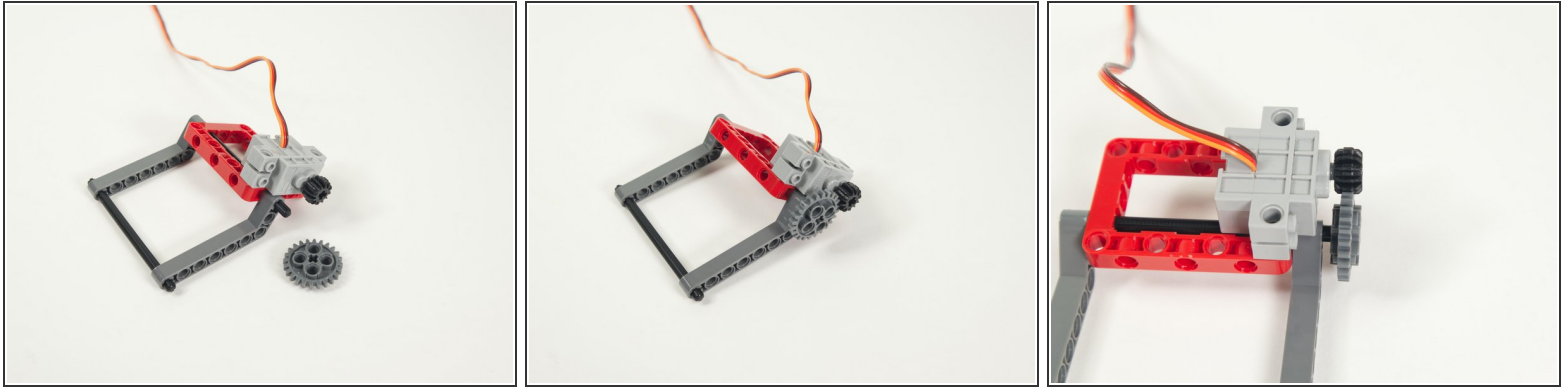
- Attach the servo to the red frame using the black pins we just added.
- Note that the shaft of the servo is towards the back of the Lifter and the wires are on top of the servo.

Step 8 — Add Small Gear to Servo



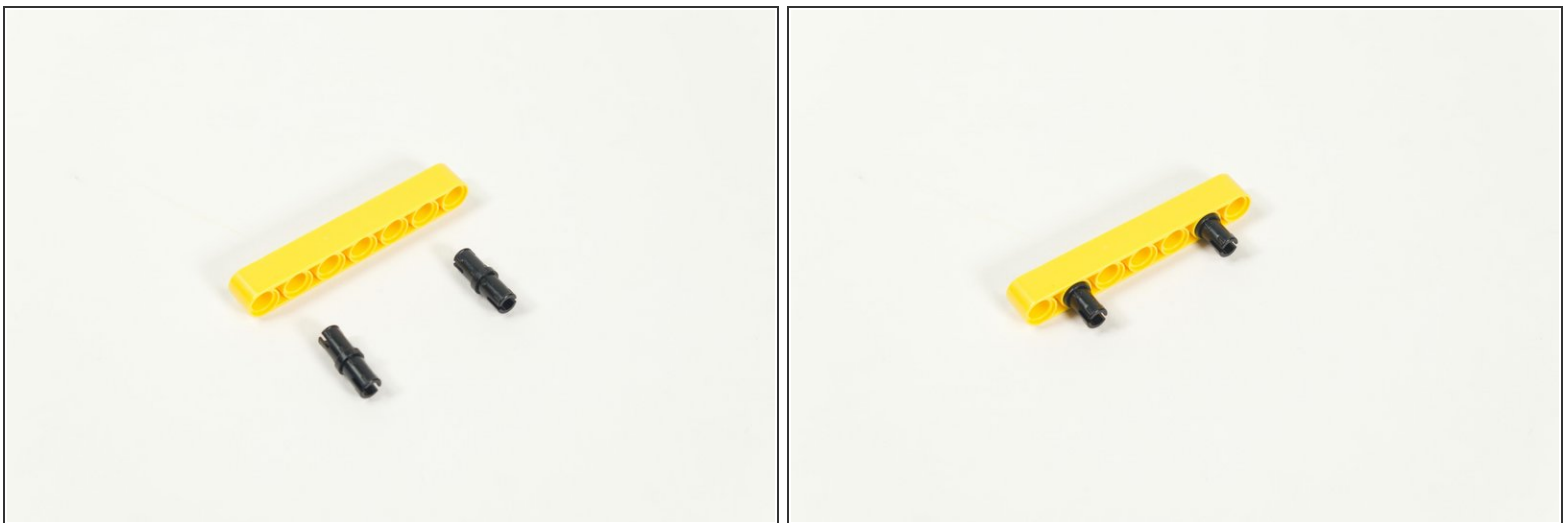
- Next we'll press the small gear onto the servo shaft.
- Make sure to press the gear all the way onto the shaft. This ensures it lines up with the other gear we'll add next.

Step 9 — Add Large Gear to Axle



- Add the large gear to the portion of the axle that is sticking out.
- Make sure the gear is lined up and centered with the smaller gear that is on the servo.

Step 10 — Add Two Pins to Beam



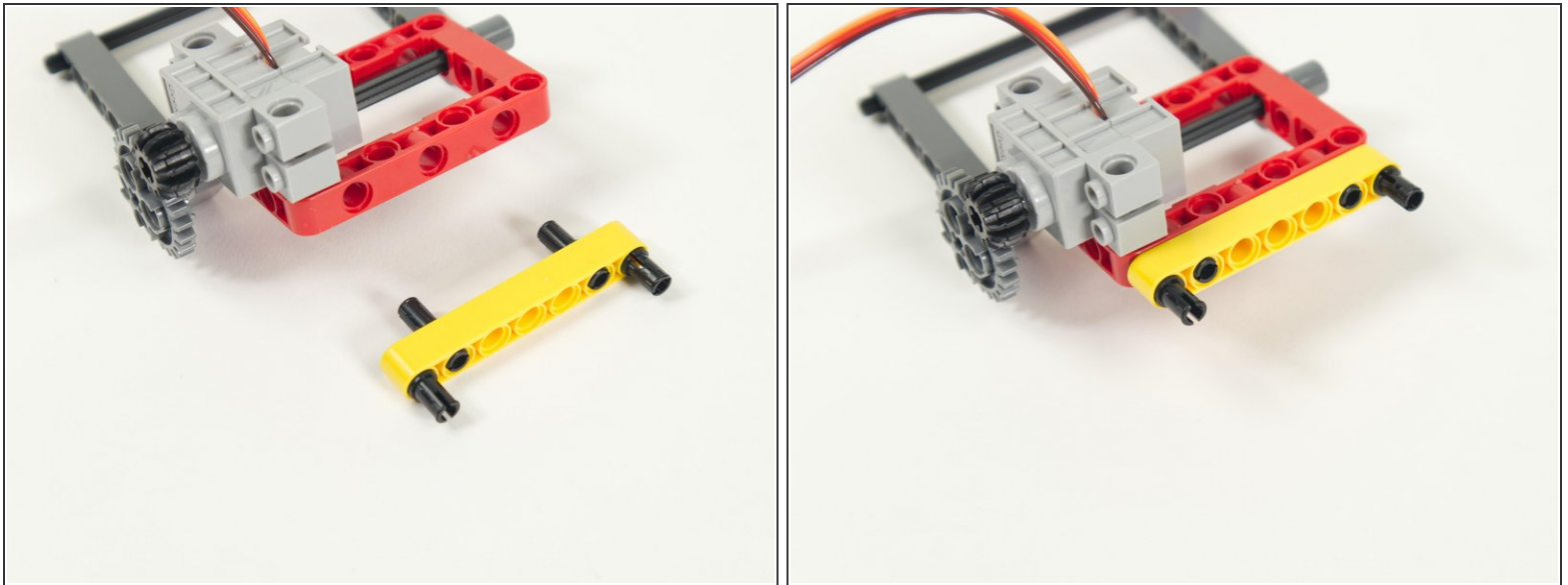
- Add two black pins to the yellow 7 hole beam.
- Place them into the second hole on each end.

Step 11 — Add Two More Pins to Beam



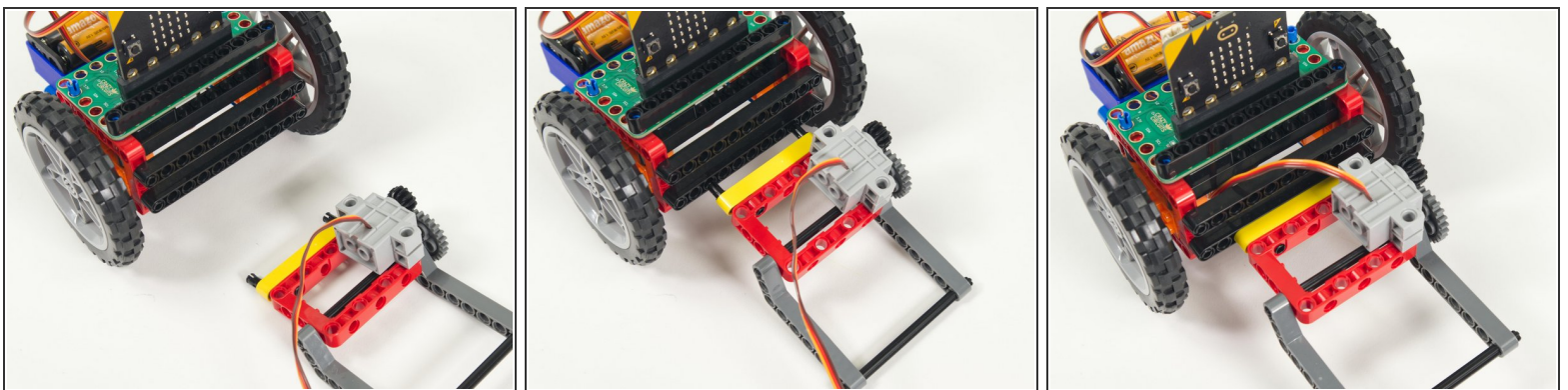
- Add two more black pins on the opposite side.
- These should go in the holes closest to the end of the beam.

Step 12 — Add Beam to Frame



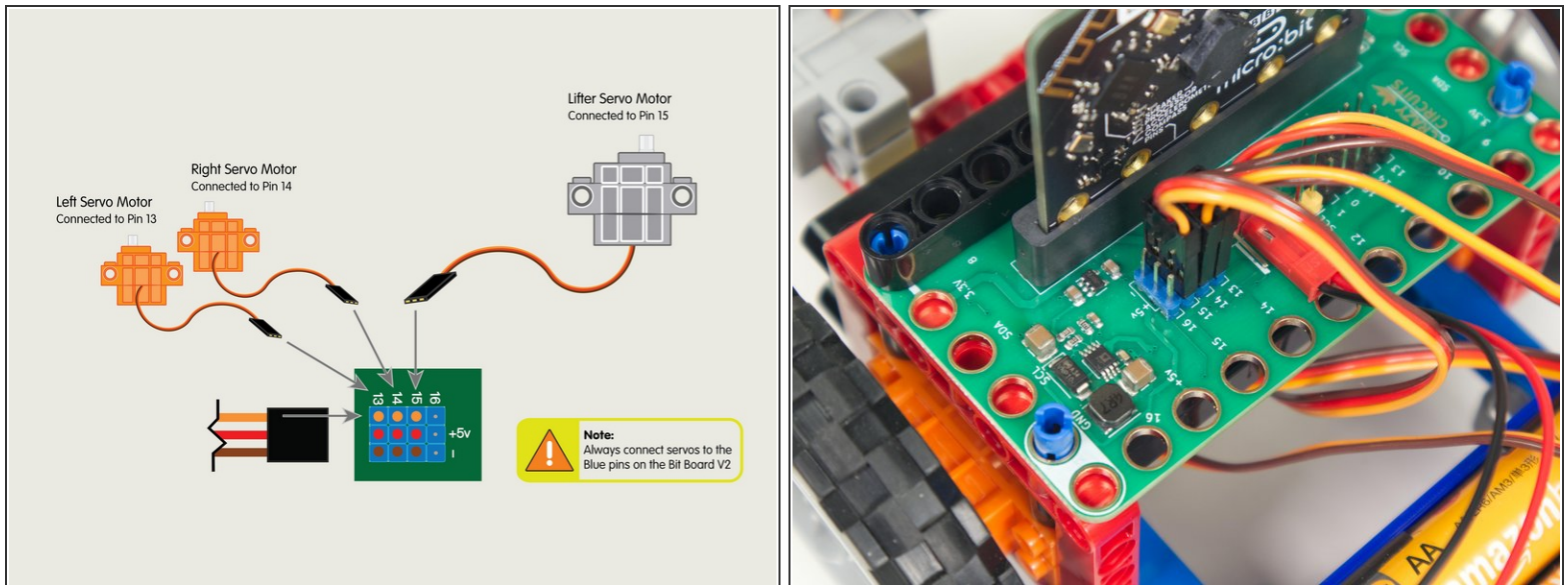
- Add the beam to the back of the Lifter's red frame.
- Connect the side that lines up with the holes in the frame.
- We're now ready to attach the Lifter to the Rover!

Step 13 — Attach Lifter to Rover



- Attach the Lifter to the lower beam on the front of the Rover.
- Center it and push it in so the pins lock it in place.

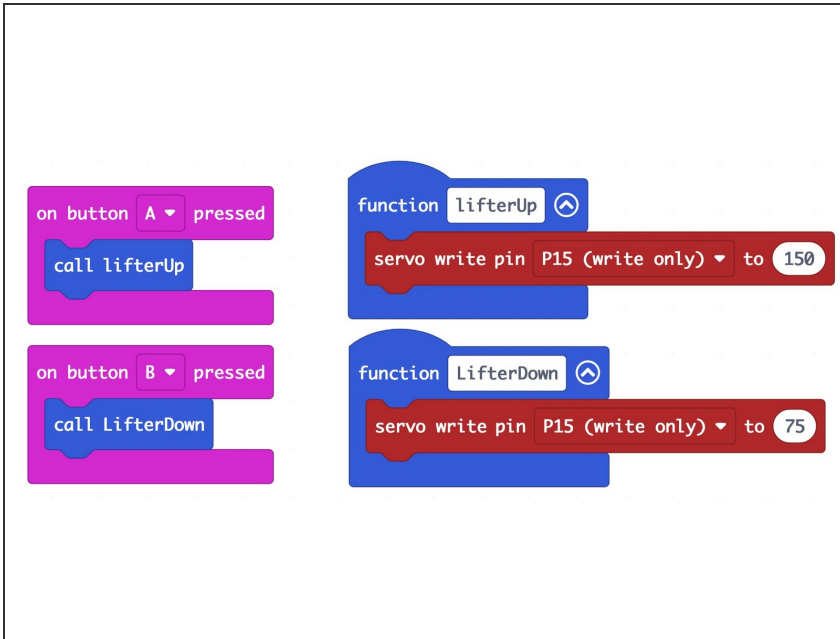
Step 14 — Connect Servo



- Plug the servo connector into the row for **Pin 15**. The orange wire should go to the pin closest to the 15 on the board, the red wire goes into the **+5v** row, and the brown wire goes into the **-** row, which is ground.

⚠ All servos should go to the 5V Blue Pins.

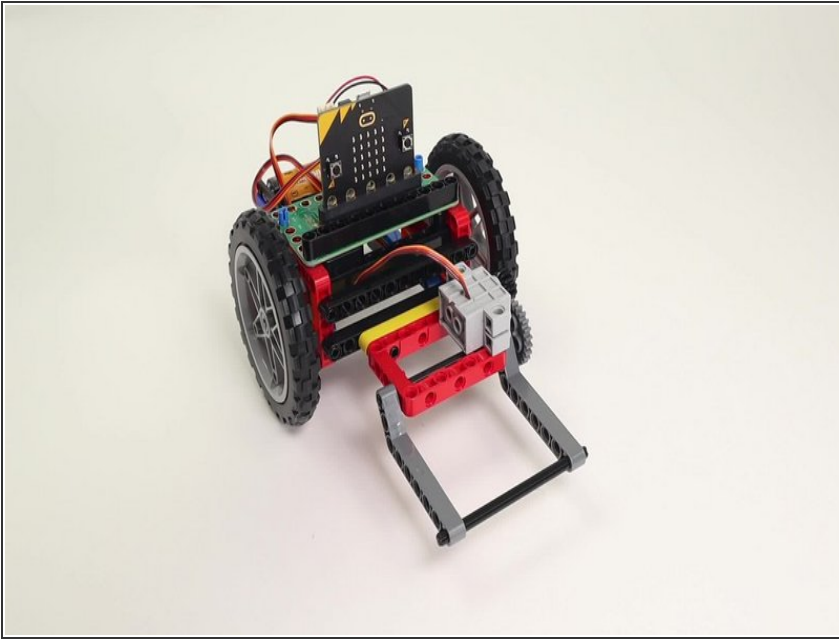
Step 15 — Load the Code



⚠ If you've never used a micro:bit before you'll want to check out this guide: [Bit Board V1 Setup and Use](https://makecode.microbit.org/_5kc9Yx7W2...)

- We're going to load the following code for our **Lifter Test Code** program:
https://makecode.microbit.org/_5kc9Yx7W2...
- This code is very simple, and is just meant to test the Lifter.
- When you press the **A button** on the front of the micro:bit it should raise the Lifter.
- When you press the **B button** on the front of the micro:bit it should lower the Lifter.

Step 16 — Test it Out!



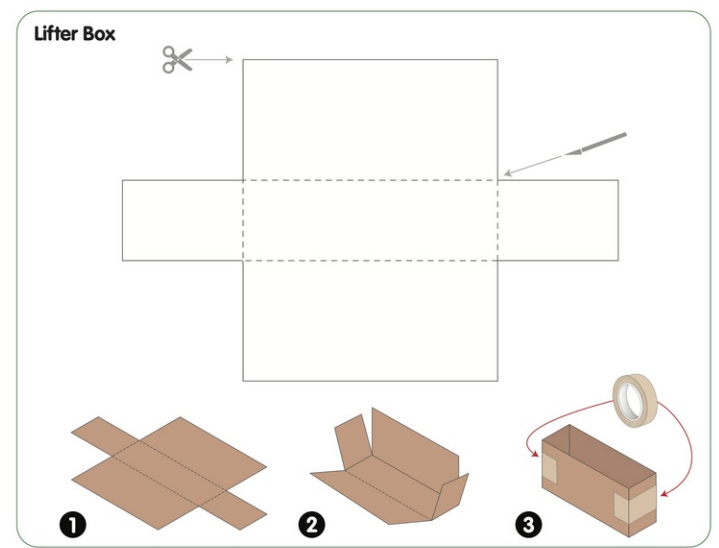
- To test the Lifter power the Bit Board with the battery pack.
- If the angles are not correct you can change the values in the code, but you can also remove the large gear, swing the beams to the correct position, and the reattach the gear.
- Between moving the large gear, and changing the values in the code, you should be able to get the lifter to the exact angles you want.

Step 17 — Remote Control with Lifter



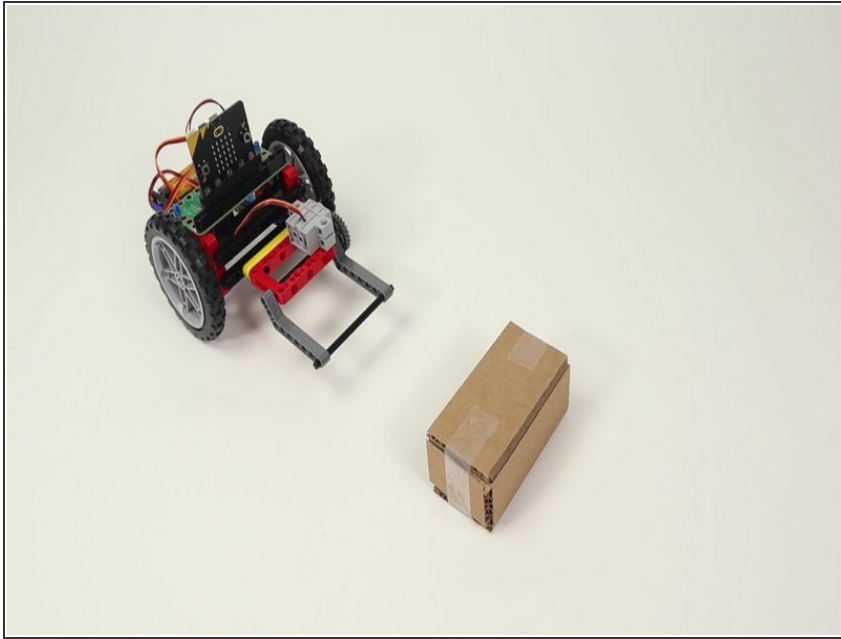
- If you've got a [Rover Thumbstick Remote](#) you can use the following code to control the Rover and Lifter.
- Load the Rover code for the **Thumb Remote Lifter TX** onto the micro:bit on the Remote: https://makecode.microbit.org/_g6yVVV489...
- And load the **Rover Thumb Remote Lifter RX** onto the micro:bit on the Rover: https://makecode.microbit.org/_RCdey2K72...
- Once the code is loaded you can drive around your Rover and lift things!

Step 18 — A Box to Lift



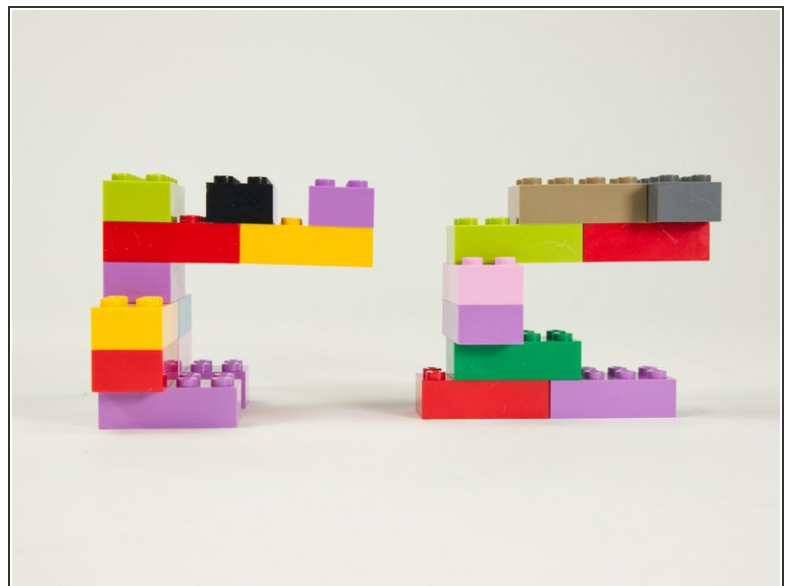
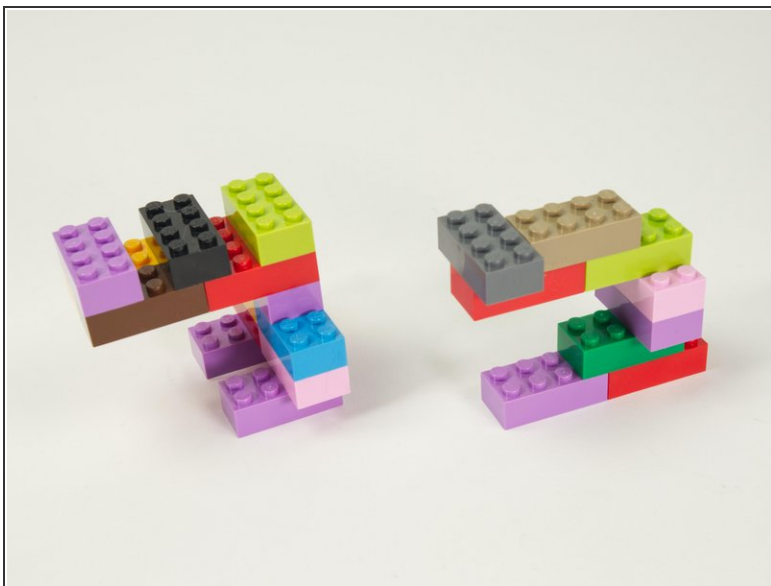
- We've included a PDF template with this guide that you can download and print, and then use to cut out and assemble a small box that is perfect for lifting.
- We recommend cardboard, but you could also make the box using card stock or just plain paper.
- ① We've designed the box the right size to work with the Lifter, but you can try other sizes as a problem-solving exercise.

Step 19 — Lift the Box



- If you've got the Remote code working with the Rover you can drive the Rover and Lift things... Give it a try!

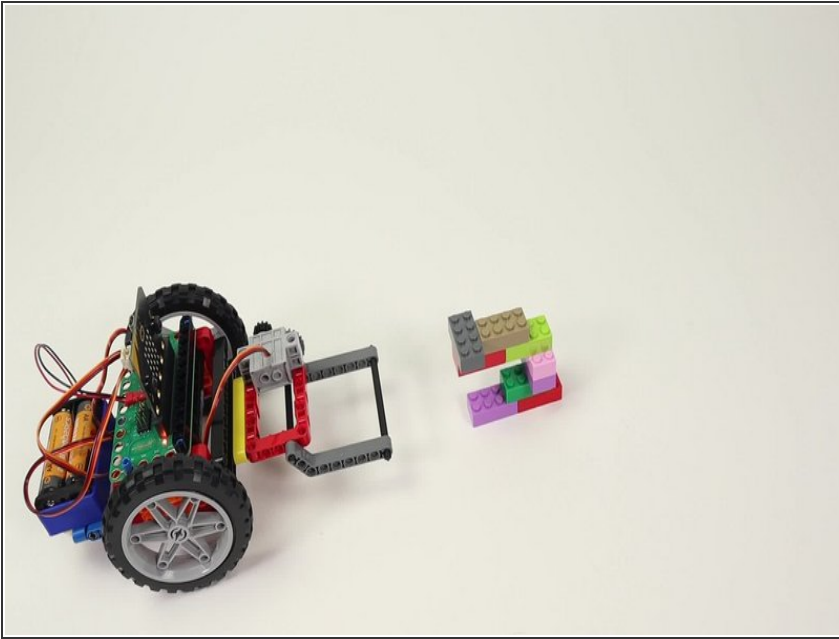
Step 20 — Some Bricks to Lift



- You can build other objects to lift. Here are some LEGO bricks we used to build some objects.
- Note that you need to design and build an object that is **capable of being lifted**, which can be a challenge!
- In fact, you can turn the task of building a liftable object into a good design challenge.

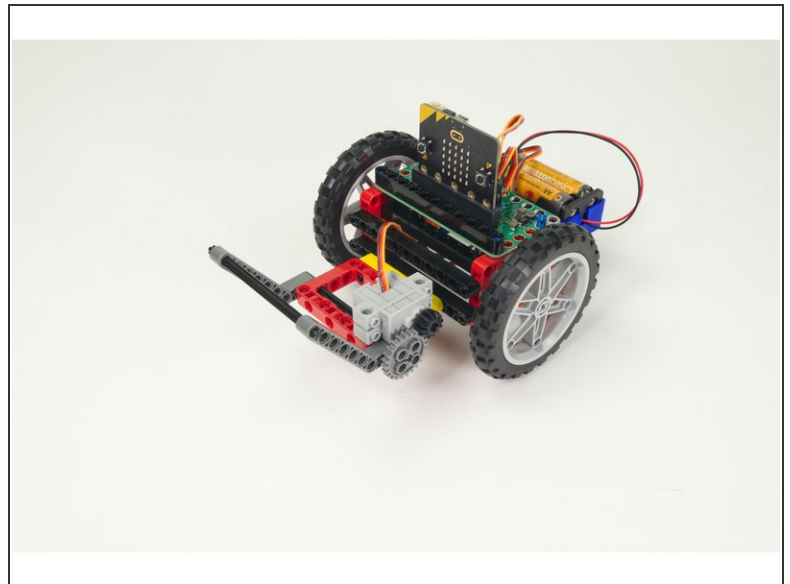
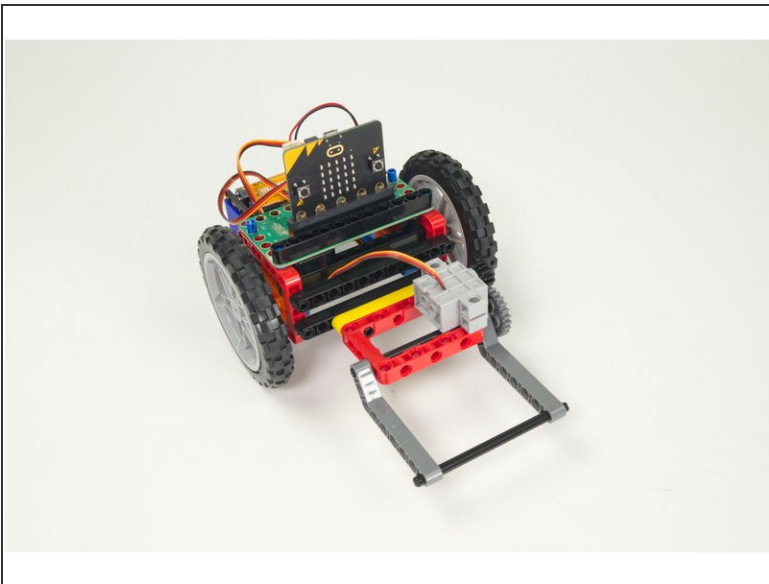
This document was generated on 2023-03-10 04:23:18 AM (MST).

Step 21 — Lift Some Bricks



- Our simple brick-based object can be lifted, but special consideration needs to be applied to create a liftable object.

Step 22 — Take it Further



- The Rover Lifter is quite different than the [Rover Gripper](#) so it creates an entirely new set of challenges and activities.
- We'll be creating more guides for both of them, and welcome any feedback about how you are using the Rover and accessories!

