



Rotary Encoder Holder

A 3D Printed LEGO Compatible mount for a Rotary Encoder.

Written By: Pete Prodoehl



INTRODUCTION

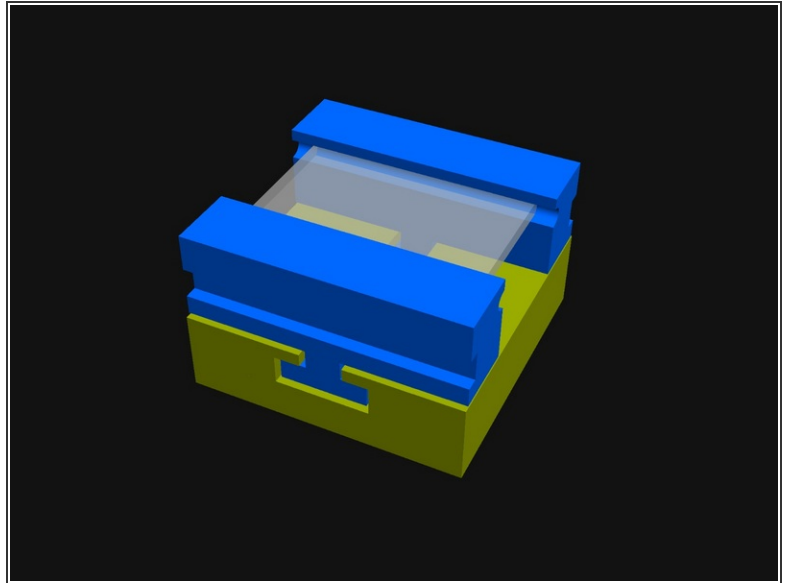
A 3D Printed LEGO Compatible mount for a Rotary Encoder.



TOOLS:

- [3D Printer](#) (1)
-

Step 1 — Download and Print



- You can download the files and print them on your own 3D Printer.
- Find it in our GitHub repository: <https://github.com/BrownDogGadgets/3D-Pr...>
- You can also download the files from [Printables](#) or [Thingiverse](#).
- This file will work with this [KY-040 Rotary Encoder](#).
- For full instruction on usage check out the [3D Printed Component Holder](#) guide.