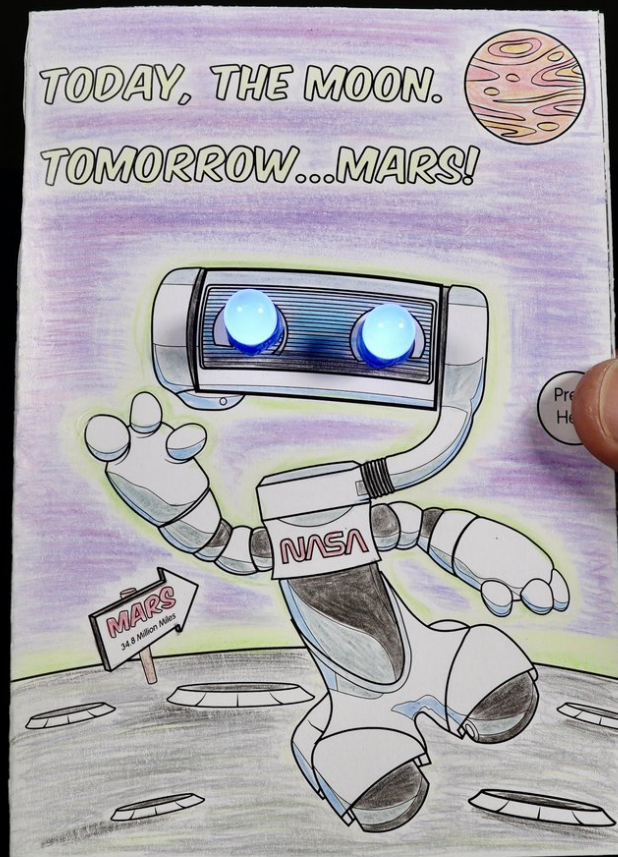




NASA RT Light-Up Greeting Card

These are fully illustrated and printable assembly instructions for your NASA RT Light-Up Greeting Card.

Written By: Joshua



INTRODUCTION

These are fully illustrated and printable assembly instructions for your NASA RT Light-Up Greeting Card.



TOOLS:

- [Scissors](#) (1)
- [Markers, Crayons, or Colored Pencils](#) (1)
- [Push Pin](#) (1)



PARTS:

- [Jumbo 10mm Diffused LED](#) (2)
- [Maker Tape](#) (1)
- [1/4"](#)
- [CR2032 Battery](#) (1)

