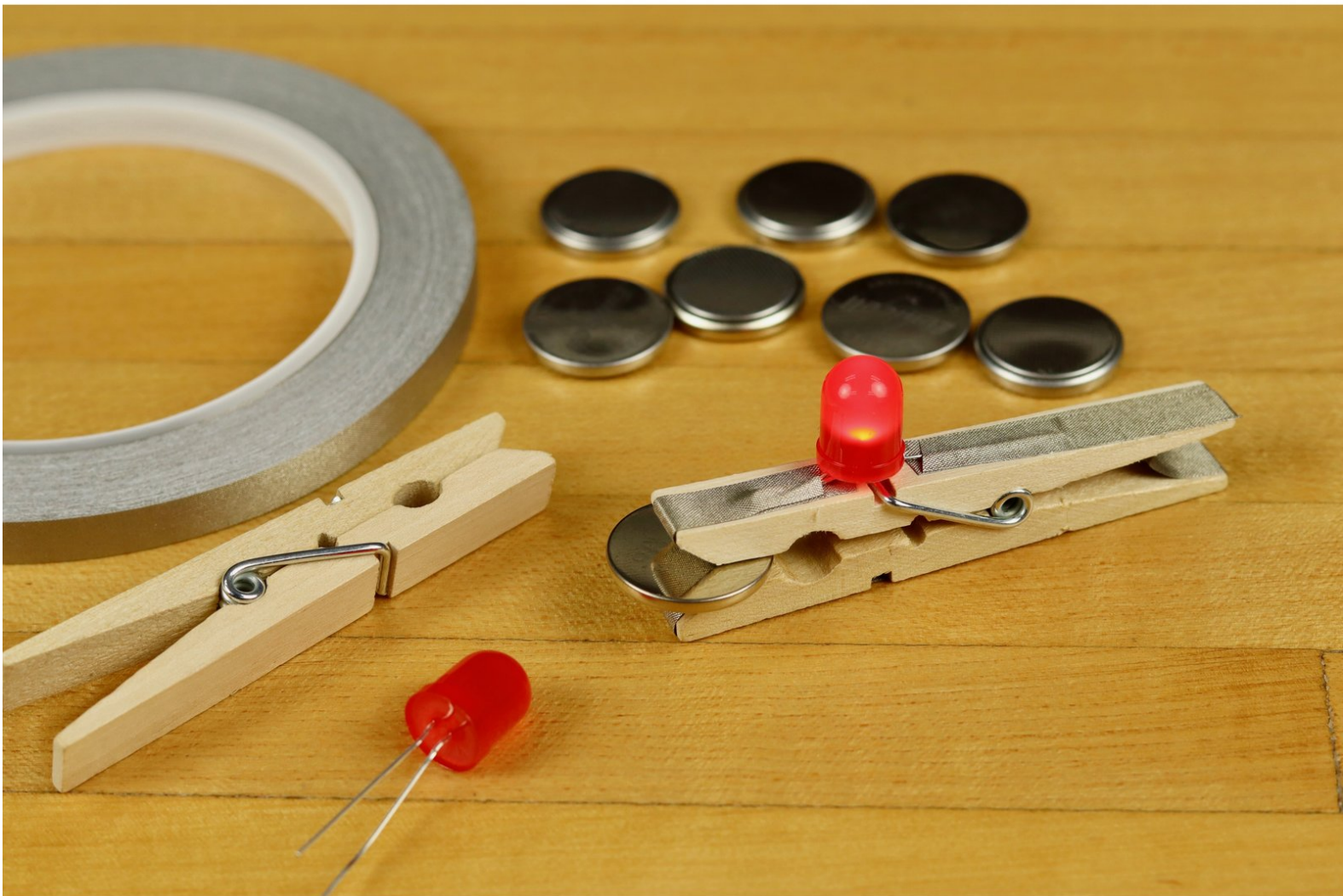




Simple Coin Cell Battery Tester

A simple coin cell battery holder tester using a red LED, some Maker Tape, and a clothespin.

Written By: Joshua



INTRODUCTION

We often have piles of CR2032 coin cell batteries around, and it's always a pain to figure out which ones are good or not. That's why we've made this simple coin cell battery holder tester using a red LED, some Maker Tape, and a clothespin.



TOOLS:

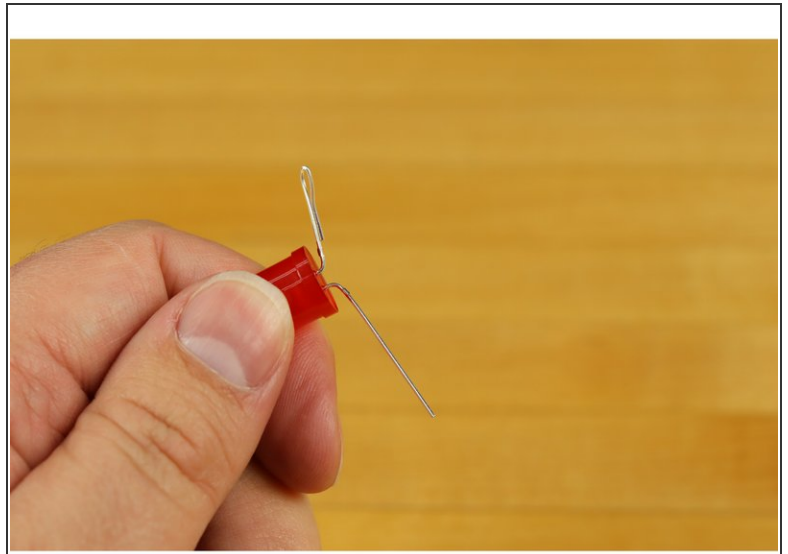
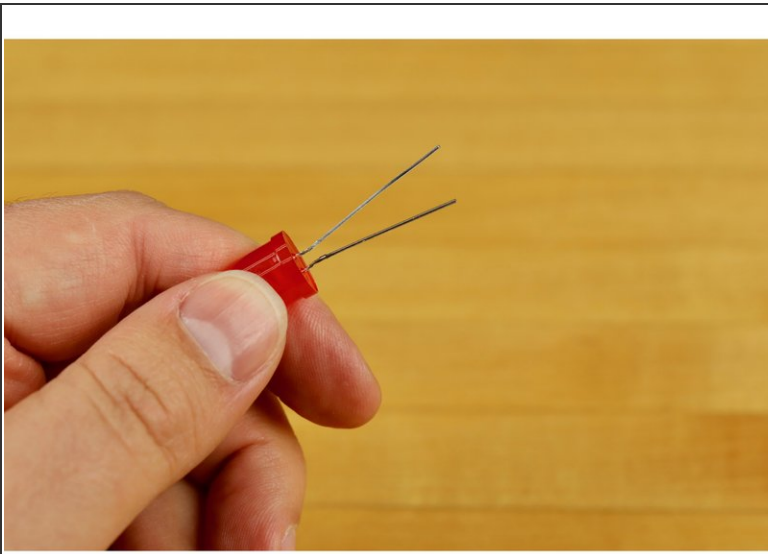
- [Scissors](#) (1)



PARTS:

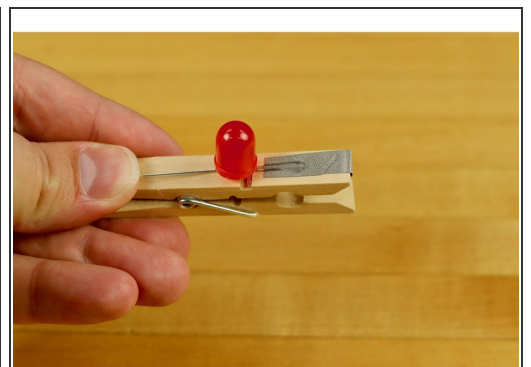
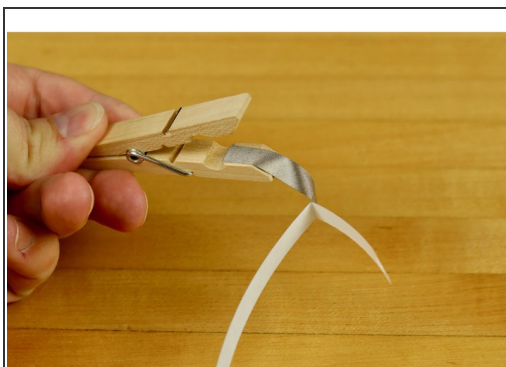
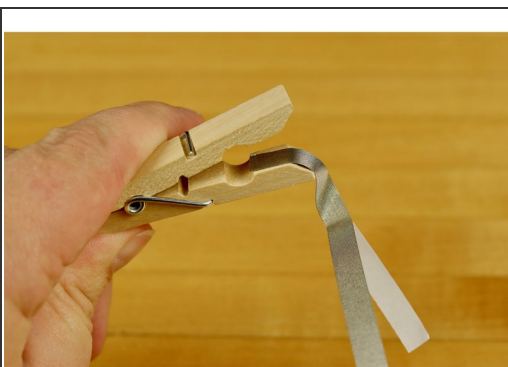
- [Maker Tape](#) (1)
1/4" Wide
- [LEDs](#) (1)
- [Clothespin](#) (1)

Step 1 — Prepare the LED



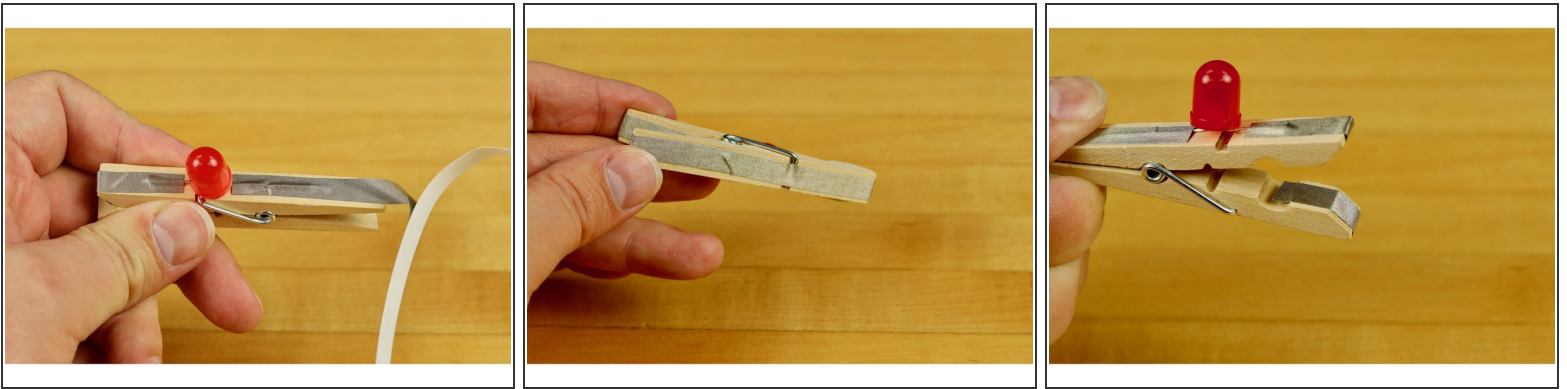
- The long leg of your LED is the positive leg.
- Bend it in half and then outward.
- Bend the short leg outward. Don't bend it in half. (It doesn't matter if you do or not.)

Step 2 — Add Positive Tape



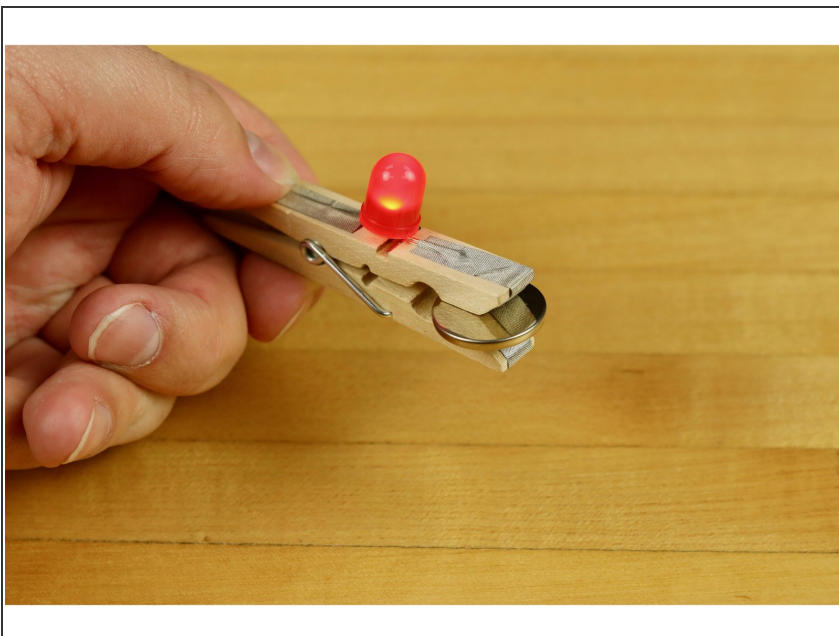
- Open up your clothespin and apply tape on the flat inside area.
- Go around the lip.
- Cover the bent, positive leg, of your LED.

Step 3 — Connect the Negative Leg



- Cover the negative leg of your LED with tape.
 - Go around the backside of the clothespin and to the bottom.
 - End on the other flat inside area.
- i** Don't overcomplicate things on the back, inside V area. The part where you press together. We like to go inside a bit with some tape to make it look clean, but as long as it works when you're finished... who cares?

Step 4 — Test It



- Put a battery in and see if it works.
- If it DOESN'T work flip the battery over and try again. You may have gotten your LED legs backwards.